



# Orbost and District Community Plan 2010 - 2020

Final Draft

January 2010

Author: Bruce Connolly

© Copyright, Nexus Consulting (Aust) Pty Ltd  
January 2010.

PO Box 24, Bairnsdale, 3875  
nexus@net-tech.com.au

This work is copyright. Apart from any use as permitted under Copyright Act 1963, no part may be reproduced without written permission of Nexus Consulting (Aust) Pty Ltd.

### **Disclaimer**

This report contains opinions and interpretations based on the information provided by the client and other sources. By reason of legal liability associated with the presentation of such information, this report is subject to the following disclaimer.

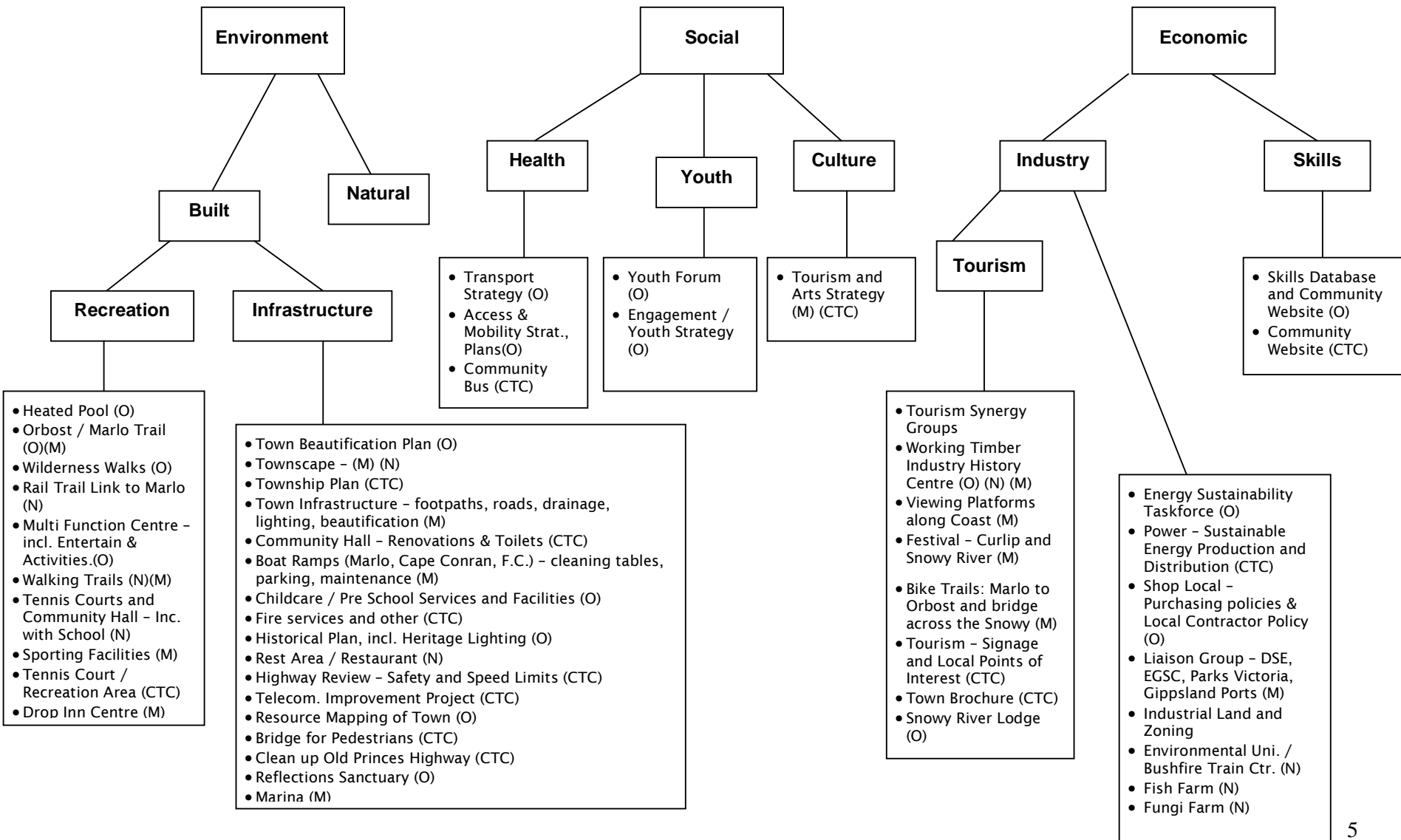
While the information is provided in good faith, Neither Nexus Consulting (Aust) Pty. Ltd. nor any contractor or employee of Nexus Consulting (Aust) Pty. Ltd. takes responsibility in any way whatsoever to any person or organisation (other than that for which this report has been prepared) in respect of the information set out in this report, including any errors or omissions therein. Nexus Consulting (Aust.) Pty. Ltd. does not warrant the accuracy of the information, or assume legal responsibility for it, or any damage resulting from reliance on, or use of the information provided. Neither is the author responsible for any negligence of the client or other persons with respect to use of any of the information.

# Contents

<b>COMMUNITY PLAN SUMMARY</b>	<b>4</b>	<b>CONSULTATION AND FORUM</b>	
Orbost and District Community Plan	5	<b>SUMMARIES</b>	<b>92</b>
<b>COMMUNITY ACTION PLANS</b>	<b>6</b>	Orbost Forum Notes	93
Project List (in priority order)	8	Marlo Forum Notes	100
<b>ENVIRONMENT</b>	<b>10</b>	Cabbage Tree Creek Forum Notes	104
Environment Community Action Plans	11	Newmerella Forum Notes	108
<b>SOCIAL</b>	<b>36</b>	<b>Appendix 1: Forum Flyer</b>	<b>112</b>
Social Community Action Plans	37	<b>Appendix 2: Forum Attendees</b>	<b>114</b>
<b>ECONOMIC</b>	<b>43</b>	<b>Appendix 3: Survey Respondents</b>	<b>116</b>
Economic Community Action Plans	44		
<b>COMMUNITY AND ECONOMIC PROFILE</b>	<b>64</b>		
Key Findings	65		
1 Introduction	68		
2. Community	69		
2.1 Resident Population	69		
2.2 Age Profile	71		
2.3 Resident Indigenous Population	72		
2.4 Births and Deaths	72		
2.5 Ancestry	73		
2.6 Households	73		
2.7 Income	76		
2.8 Pension and Benefit Recipients	78		
2.9 Need for Assistance	79		
2.10 Education	80		
2.11 Internet Usage	82		
2.12 Motor Vehicle Registrations	82		
3. Economy	83		
3.1 Employment	83		
3.2 Industry of Employment by Occupation	85		
3.3 Internal Migration	86		
3.4 Unemployment	87		
3.5 Businesses	89		
3.6 Business Entries and Exits	90		
3.7 Agriculture	91		
3.8 Agriculture Land Tenure	91		

# **Community Plan Summary**

# Orbost and District Community Plan



## **Community Action Plans**

The following Community Action Plans have been developed through extensive consultation with members of the community and key Government agencies. Each action is aligned with one of the three key areas identified throughout the process. These key areas are:

- \* ENVIRONMENT
- \* SOCIAL
- \* ECONOMIC

Where possible, actions are also aligned with one (or more) of the four pillars of the East Gippsland Shire Council's *Council Plan 2009-2013*. The four pillars are:

- \* Liveability
- \* Sustainability
- \* Productivity
- \* Governance

The Action Plans are grouped according to each of the three key areas. Where appropriate projects identified by more than one community have been combined to create a unified approach and maximise the community participation.

The projects with the greatest level of support (determined through the consultation process) and community members willing to participate are identified as key priorities. All identified projects are included.

The resourcing and support for the action working groups is addressed in the section following the Plans.

## PROJECT LIST (in priority order)

### ORBOST

- \* Heated Pool
- \* Orbost/Marlo Trail
- \* Town Beautification Plan, including footpaths and recreation reserve
- \* Transport Strategy
- \* Youth Forum and Youth Strategy
- \* Wilderness Walks
- \* Energy Sustainability Taskforce
- \* Childcare/Pre-School Services and Facilities
- \* Shop Local – Purchasing and Local Contractor Policies
- \* Tourism Synergy Groups
- \* Multi Function Centre – including entertainment and activities
- \* Industrial Land and Zoning
- \* Historical Plan, including Heritage Lighting
- \* Skills Database and Community Website
- \* Access and Mobility Plans
- \* Working Timber History Centre
- \* Resource Mapping of Town
- \* Reflections Sanctuary
- \* Snowy River Lodge

### MARLO

- \* Town Infrastructure – footpaths, roads, drainage lighting, beautification
- \* Boat Ramps (Cape Conran, Marlo, F.C.) – cleaning tables, parking, maintenance
- \* Bike Trails – Marlo to Orbost and bridge across River
- \* Walking Trails
- \* Viewing Platforms Along Coast
- \* Townscape – coach parking, jetty area and retail precinct
- \* Festival – Curlip and Snowy River
- \* Sporting Facilities
- \* Signage

- \* Tourism and Arts Strategy
- \* Liaison Group – DSE, EGSC, Parks Victoria, Gippsland Ports
- \* Drop In Centre
- \* Wood Working Village
- \* Marina

### CABBAGE TREE CREEK

- \* Community Hall – Renovation and Toilets
- \* Fire Services and Other
- \* Highway Review
- \* Telecommunications Improvement Plan
- \* Power – Sustainable Energy Production and Distribution
- \* Township Plan & Bridge for Pedestrians & Signage
- \* Community Website
- \* Clean up Old Princes Highway
- \* Tourism – signage and local points of interest
- \* Community Bus
- \* Tourism Brochure
- \* Tennis Court and Recreation Area

### NEWMERELLA

- \* Townscape Plan, including Rest Area & Restaurant
- \* Tennis Courts and Community Hall – incorporate with school
- \* Rail Trail link to Marlo
- \* Environmental University / Bushfire Training Centre
- \* Working Timber Museum Centre
- \* Walking Tracks
- \* Service development
- \* Fish Farm and Fungi Farm



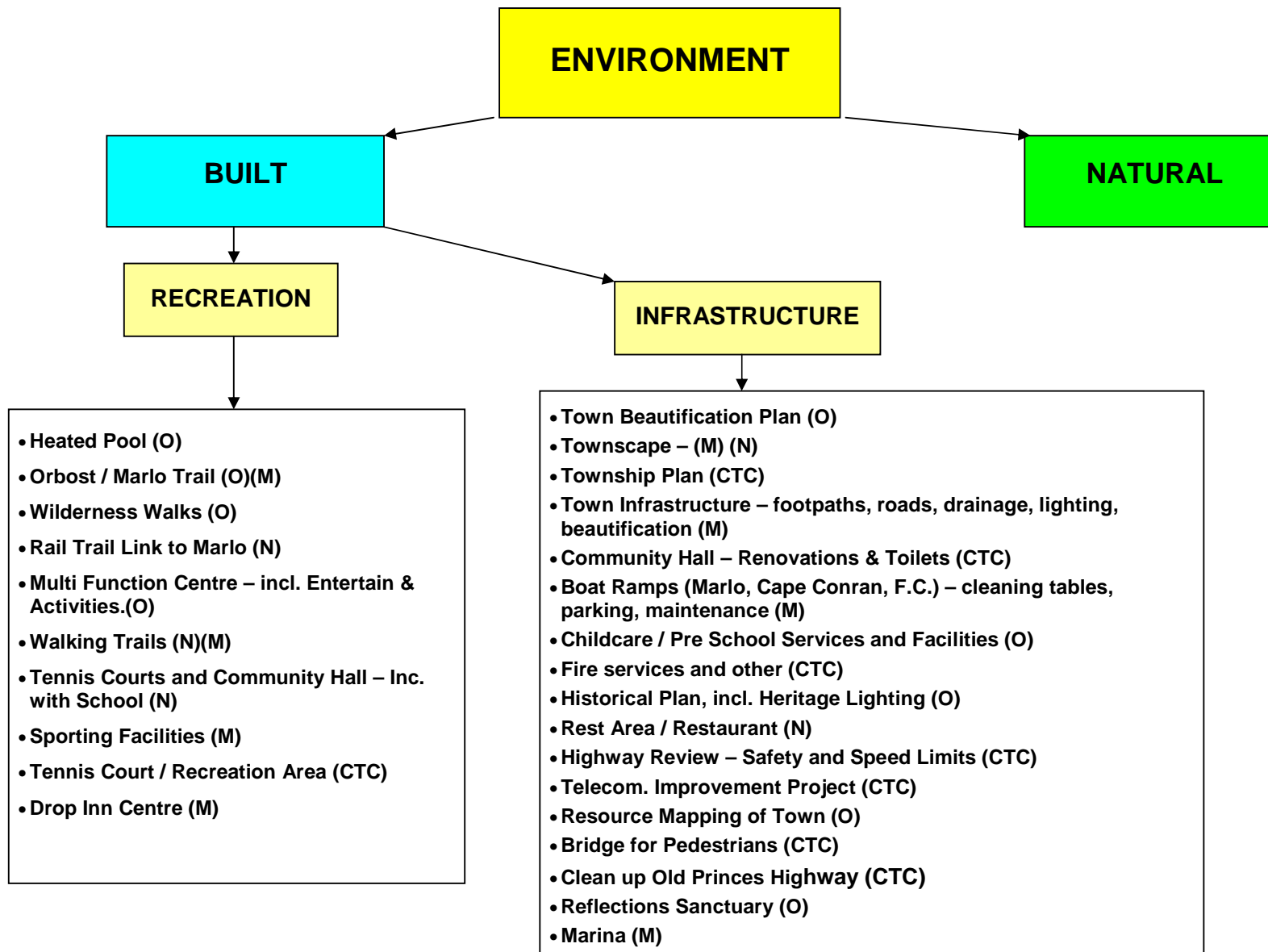
# Environment

The Environment of Orbost and District includes both the built environment and the natural environment. Whilst not articulated in the projects, the communities of Orbost and District highly value the natural environment. This is supported by the frequent comments received when identifying the strengths of the area – comments such as the ‘natural beauty,’ the ‘diverse natural environment’ and the ‘reason we choose to live here’ support the feelings about the natural environment. In some ways the communities accept the natural environment as a ‘given’ and would like to ensure that any development or growth is balanced with the natural environment.

In relation to the built environment, there are two key areas that were raised and proposed projects were discussed by community members; recreation and infrastructure. The projects within these two areas support future aspirations for Orbost and District, which include:

- \* The communities will have facilities and services available for their ageing population
- \* Each of the communities will have plans to enhance the townships services and facilities
- \* Orbost and District will have suitable facilities for the purposes of recreation, sport and entertainment
- \* Adequate services will be provided for the younger members of the communities.

# Environment Community Action Plans



<b>ENVIRONMENT – BUILT – RECREATION</b>		<b>Action Team:</b>		
<b>Strategy: <i>Heated Pool (Orbost)</i></b>		Lillian Bishop, Gail Hume, Raeleigh Phillips, Yvonne Knight, David Perry, Sammi Geneikis, Derek Mason, Laura Munn, Suzanne Mac Namara, Wanda Battel, Sue Robinson, Kylie Walker, Wendy Shepherd, Janine Hooper, Gail Wright		
<b>Council Plan Alignment: Liveability</b>				
<b>Action</b>	<b>Persons Responsible</b>	<b>Critical Dates</b>	<b>Performance Measures</b>	<b>Resources Required</b>

<b>ENVIRONMENT – BUILT – RECREATION</b>		<b>Action Team:</b>		
<b>Strategy: <i>Orbost / Marlo Trail (Orbost/Marlo)</i></b>		Andrew Martin, Raeleigh Phillips, Wanda Battel, Yvonne Knight, Heather Terrell, Gail Hume, Marlene Robb, Liz Mitchell, Kylie Walker, Fiona McDermott, Ian Jones		
<b>Council Plan Alignment: Liveability</b>				
<b>Action</b>	<b>Persons Responsible</b>	<b>Critical Dates</b>	<b>Performance Measures</b>	<b>Resources Required</b>

<b>ENVIRONMENT – BUILT – RECREATION</b>		<b>Action Team:</b>		
<b>Strategy: <i>Wilderness Walks (Orbost)</i></b>		Yvonne Knight, Marlene Robb, Wanda Battel, Maria Cardoso, Wendy Shepherd,		
<b>Council Plan Alignment: Productivity / Liveability</b>				
<b>Action</b>	<b>Persons Responsible</b>	<b>Critical Dates</b>	<b>Performance Measures</b>	<b>Resources Required</b>

**ENVIRONMENT – BUILT – RECREATION**

**Strategy: *Multi Function Centre (Orbost)***

**Council Plan Alignment: Liveability / Productivity**

**Action Team:**

Alicia Scobie-Webb, Sammi Geneikis, Laura Munn, Belinda Jolly

<b>Action</b>	<b>Persons Responsible</b>	<b>Critical Dates</b>	<b>Performance Measures</b>	<b>Resources Required</b>

<b>ENVIRONMENT – BUILT – RECREATION</b>		<b>Action Team:</b>		
<b>Strategy: <i>Walking Trails</i> (Orbost, Newmerella, Marlo)</b>		Clare Reynolds, Ian Jones, Stephen Henry, Anita Pike, Fiona McDermott		
<b>Council Plan Alignment: Liveability / Productivity</b>				
<b>Action</b>	<b>Persons Responsible</b>	<b>Critical Dates</b>	<b>Performance Measures</b>	<b>Resources Required</b>

<b>ENVIRONMENT – BUILT – RECREATION</b>		<b>Action Team:</b>		
<b>Strategy: <i>Tennis Courts and Community Hall (Newmerella)</i></b>		Stephen Mathers, Glenn Herbert, Phil Mitchell		
<b>Council Plan Alignment: Liveability</b>				
<b>Action</b>	<b>Persons Responsible</b>	<b>Critical Dates</b>	<b>Performance Measures</b>	<b>Resources Required</b>



<b>ENVIRONMENT – BUILT – RECREATION</b>		<b>Action Team:</b> Glenys Quick		
<b>Strategy: <i>Sporting Facilities (Marlo)</i></b>				
<b>Council Plan Alignment: Liveability</b>				
<b>Action</b>	<b>Persons Responsible</b>	<b>Critical Dates</b>	<b>Performance Measures</b>	<b>Resources Required</b>

<b>ENVIRONMENT – BUILT – RECREATION</b>		<b>Action Team:</b> Lester Burge, Linda and Chris Swan		
<b>Strategy:</b> <i>Tennis Court and Recreation Area (Cabbage Tree Creek)</i>				
<b>Council Plan Alignment:</b> Liveability				
<b>Action</b>	<b>Persons Responsible</b>	<b>Critical Dates</b>	<b>Performance Measures</b>	<b>Resources Required</b>

<b>ENVIRONMENT – BUILT – RECREATION</b>		<b>Action Team:</b> Glenys Quick		
<b>Strategy:</b> <i>Drop in Centre / Internet Café (Marlo)</i>				
<b>Council Plan Alignment:</b> Liveability				
<b>Action</b>	<b>Persons Responsible</b>	<b>Critical Dates</b>	<b>Performance Measures</b>	<b>Resources Required</b>

<b>ECONOMIC – INDUSTRY - RECREATION</b>		<b>Action Team:</b>		
<b>Strategy: <i>Rail Trail Link to Marlo</i> (Newmerella)</b>				
<b>Council Plan Alignment: Liveability</b>				
<b>Action</b>	<b>Persons Responsible</b>	<b>Critical Dates</b>	<b>Performance Measures</b>	<b>Resources Required</b>

<b>ENVIRONMENT – BUILT – INFRASTRUCTURE</b>		<b>Action Team:</b>		
<b>Strategy: <i>Town Beautification Plan and Historical Plan (Orbost)</i></b>		Rae Wilkinson, Wendy Nixon, Yvonne Knight, Marlene Robb		
<b>Council Plan Alignment: Liveability</b>				
<b>Action</b>	<b>Persons Responsible</b>	<b>Critical Dates</b>	<b>Performance Measures</b>	<b>Resources Required</b>

<b>ENVIRONMENT – BUILT – INFRASTRUCTURE</b>		<b>Action Team:</b>		
<b>Strategy: <i>Town Infrastructure and Townscape (Marlo)</i></b>		Anita Pike, David Pike, Clare Reynolds, Peter Quin, Brian Shelly, Susan Waddell, Scott and Tristi Woerz		
<b>Council Plan Alignment: Liveability / Sustainability</b>				
<b>Action</b>	<b>Persons Responsible</b>	<b>Critical Dates</b>	<b>Performance Measures</b>	<b>Resources Required</b>

<b>ENVIRONMENT – BUILT – INFRASTRUCTURE</b>		<b>Action Team:</b>		
<b>Strategy: <i>Townscape Plan – Walkways, Bike Trails, Bus Stop, Beautification, Truck Parking, Rest Area, Restaurant (Newmerella)</i></b>		Heather Terrell, Jason Griebenow, Jean Leatham, Glenn Herbert, Tom Davies, Marlene Robb, Neil Joiner, Phil Mitchell		
<b>Council Plan Alignment: Liveability / Productivity</b>				
<b>Action</b>	<b>Persons Responsible</b>	<b>Critical Dates</b>	<b>Performance Measures</b>	<b>Resources Required</b>

<b>ENVIRONMENT – BUILT – INFRASTRUCTURE</b>		<b>Action Team:</b>		
<b>Strategy: <i>Township Plan &amp; Bridge for Pedestrians &amp; Signage</i></b> <b>(Cabbage Tree Creek)</b>		Noel and Kathy Woods, Irene Butten		
<b>Council Plan Alignment: Liveability, Productivity</b>				
<b>Action</b>	<b>Persons Responsible</b>	<b>Critical Dates</b>	<b>Performance Measures</b>	<b>Resources Required</b>



<b>ENVIRONMENT – BUILT – INFRASTRUCTURE</b>		<b>Action Team:</b>		
<b>Strategy: <i>Community Hall – Renovation &amp; Toilet (Cabbage Tree Creek)</i></b>		Betty Clarke, Noel and Kathy Woods, Linda and Chris Swan, Christine and Lester Burge, Beryl and Bob King, Irene and Barry, Butten, Susanna Brady, Jack Moody		
<b>Council Plan Alignment: Liveability / Sustainability</b>				
<b>Action</b>	<b>Persons Responsible</b>	<b>Critical Dates</b>	<b>Performance Measures</b>	<b>Resources Required</b>

<b>ENVIRONMENT – BUILT – INFRASTRUCTURE</b>		<b>Action Team:</b>		
<b>Strategy: <i>Boat Ramps (Cape Conran, Marlo, F.C.) Cleaning Tables, Parking &amp; Maintenance (Marlo)</i></b>		Kevin Reynolds, Susan Waddell, Harry Ferrier, Scott and Tristi Woerz		
<b>Council Plan Alignment: Liveability / Productivity</b>				
<b>Action</b>	<b>Persons Responsible</b>	<b>Critical Dates</b>	<b>Performance Measures</b>	<b>Resources Required</b>















<b>ENVIRONMENT – BUILT – INFRASTRUCTURE</b>		<b>Action Team:</b>		
<b>Strategy: <i>Reflections Sanctuary</i> (Orbost)</b>		Judy Balmer, Max Balmer, Jocelyn Ingram		
<b>Council Plan Alignment: Liveability</b>				
<b>Action</b>	<b>Persons Responsible</b>	<b>Critical Dates</b>	<b>Performance Measures</b>	<b>Resources Required</b>

<b>ENVIRONMENT – BUILT – INFRASTRUCTURE</b>		<b>Action Team:</b>		
<b>Strategy: <i>Marina</i> (Marlo)</b>				
<b>Council Plan Alignment: Productivity / Liveability</b>				
<b>Action</b>	<b>Persons Responsible</b>	<b>Critical Dates</b>	<b>Performance Measures</b>	<b>Resources Required</b>

# Social

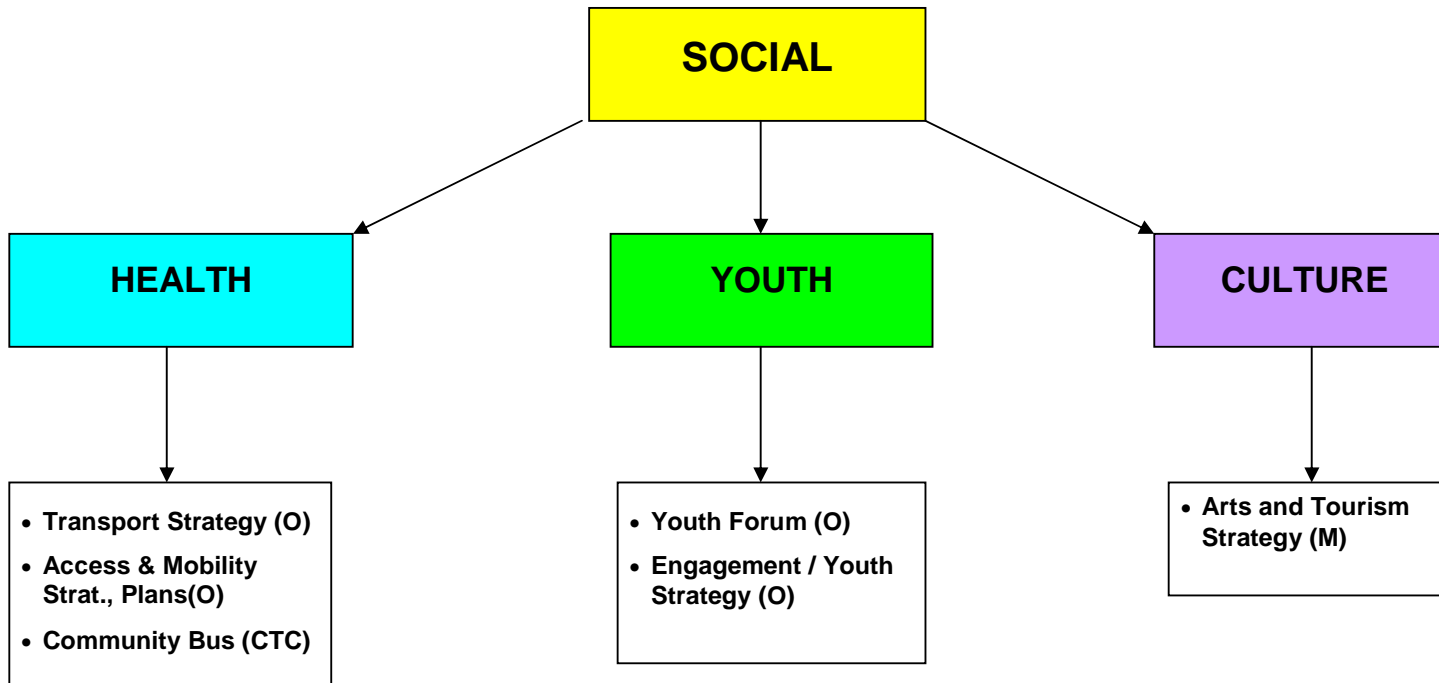
The Social component of Orbost and District includes three key elements that were identified by the communities through the consultation; Health, Youth and Culture. In each of these areas the communities identified and articulated projects and future aspirations that relate to the social development of their communities.

The communities recognise that there is an ageing population in many communities and that services will be required for this group of people. However, it was also recognised that there is a younger population that needs to be nurtured and supported and that vibrant communities need to have a strong arts and culture focus. A focus on arts and culture supports the recognition of the indigenous culture and history of the region, it supports the artists who choose to live and work in the region and provides artistic and cultural events that enrich the communities of Orbost and District.

The projects that have been identified and discussed by the communities support the future aspirations of Orbost and District in the Social context, these include:

- \* The communities of Orbost and District will have facilities and infrastructure that provide the necessary levels of support for the ageing population
- \* The youth of Orbost and District will be engaged in developing projects and activities for their peers and the communities
- \* The importance of arts and culture within Orbost and District will be recognised and supported by the communities and government
- \* Adequate services will be provided for the younger members of the communities.

# Social Community Action Plans



<b>SOCIAL - HEALTH</b>		<b>Action Team:</b>		
<b>Strategy: <i>Transport Strategy (Orbost)</i></b>		David Perry, Gail Hume, Denise Lynn, Sammi Geneikis		
<b>Council Plan Alignment: Productivity / Liveability</b>				
<b>Action</b>	<b>Persons Responsible</b>	<b>Critical Dates</b>	<b>Performance Measures</b>	<b>Resources Required</b>

<b>SOCIAL - HEALTH</b>		<b>Action Team:</b>		
<b>Strategy: Access and Mobility Strategy and Plans (Orbost)</b>				
<b>Council Plan Alignment: Liveability</b>				
<b>Action</b>	<b>Persons Responsible</b>	<b>Critical Dates</b>	<b>Performance Measures</b>	<b>Resources Required</b>

<b>SOCIAL - HEALTH</b>		<b>Action Team:</b>		
<b>Strategy: <i>Community Bus</i> (Cabbage Tree Creek)</b>		Noel Woods		
<b>Council Plan Alignment: Liveability</b>				
<b>Action</b>	<b>Persons Responsible</b>	<b>Critical Dates</b>	<b>Performance Measures</b>	<b>Resources Required</b>

<b>SOCIAL - YOUTH</b>		<b>Action Team:</b>		
<b>Strategy: <i>Youth Forum and Youth Strategy (Orbost)</i></b>		Lillian Bishop, Sammi Geneikis, Laura Munn, Belinda Jolly		
<b>Council Plan Alignment: Liveability</b>				
<b>Action</b>	<b>Persons Responsible</b>	<b>Critical Dates</b>	<b>Performance Measures</b>	<b>Resources Required</b>



<b>SOCIAL - CULTURE</b>		<b>Action Team:</b>		
<b>Strategy: <i>Arts and Tourism Strategy (Marlo)</i></b>		Peter Quin, Cynthia Boyle (Arts), Sue Jones, Judy Van der Vlugt		
<b>Council Plan Alignment: Sustainability / Liveability / Productivity</b>				
<b>Action</b>	<b>Persons Responsible</b>	<b>Critical Dates</b>	<b>Performance Measures</b>	<b>Resources Required</b>

# Economic

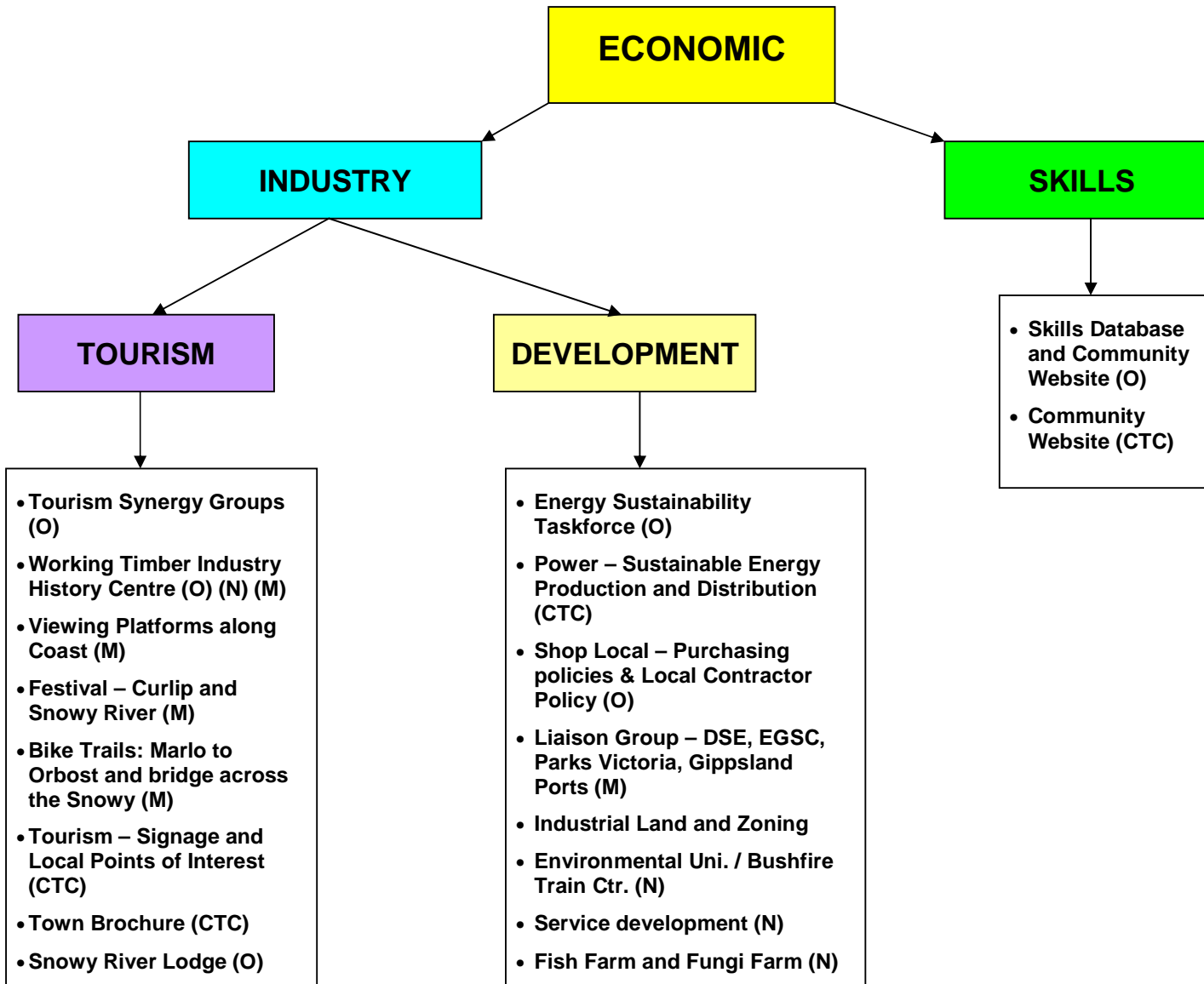
The Economic component of this plan includes two key elements: Industry and Skills. All of the communities recognise the importance of the need to retain, attract and build new businesses and industry sectors within Orbost and District. The level of employment within the communities determines the level of economic activity which in turn impacts on the social amenity of the communities.

In conjunction with the level of economic activity, it is also recognised that the level of skills of the workers has an impact on the economies of Orbost and District and that there is a need to enhance the opportunities for skill development and training in the region. With advances in technology the capacity to access education and training has increased and reduced the 'tyranny of distance' impact on employees and employers.

A key industry sector identified through the consultation is the tourism industry. A diverse range of projects were identified and discussed throughout the consultation and a number of tourism related projects have been supported. The communities support the need for a strong and growing economy, as articulated in the future aspirations, which include:

- \* The retention and support of existing businesses and the attraction of new businesses to Orbost and District is a key priority for the communities
- \* Greater use will be made of technology to assist in the delivery of training and education of employees and employers and for small business operators to operate online
- \* Orbost and District will endeavour to be self sufficient communities wherever possible
- \* The identification and support of new industry sectors will be supported to complement the traditional industry sectors.

# Economic Community Action Plans



<b>ECONOMIC – INDUSTRY - TOURISM</b>		<b>Action Team:</b>		
<b>Strategy: <i>Tourism Synergy Group (Orbost)</i></b>		Jocelyn Ingram, Peter Quin, Suzanne Mac Namara, Liz Mitchell, Denise Lynn		
<b>Council Plan Alignment: Productivity / Sustainability</b>				
<b>Action</b>	<b>Persons Responsible</b>	<b>Critical Dates</b>	<b>Performance Measures</b>	<b>Resources Required</b>

<b>ECONOMIC – INDUSTRY - TOURISM</b>		<b>Action Team:</b> Tom Davies, Max Reynolds, Wendy Shepherd		
<b>Strategy:</b> <i>Working Timber Industry History Centre (Orbost, Newmerella)</i>				
<b>Council Plan Alignment:</b> Productivity				
Action	Persons Responsible	Critical Dates	Performance Measures	Resources Required

<b>ECONOMIC – INDUSTRY - TOURISM</b>		<b>Action Team:</b>		
<b>Strategy: <i>Viewing Platforms Along Coast</i> (Marlo)</b>				
<b>Council Plan Alignment: Liveability / Productivity</b>				
<b>Action</b>	<b>Persons Responsible</b>	<b>Critical Dates</b>	<b>Performance Measures</b>	<b>Resources Required</b>

<b>ECONOMIC – INDUSTRY - TOURISM</b>		<b>Action Team:</b>		
<b>Strategy: <i>Festival – Curlip / Snowy River (Marlo)</i></b>		Sue Jones, Judy Van der Vlugt, Harry Ferrier, Stephen Henry		
<b>Council Plan Alignment: Productivity / Sustainability</b>				
<b>Action</b>	<b>Persons Responsible</b>	<b>Critical Dates</b>	<b>Performance Measures</b>	<b>Resources Required</b>

<b>ECONOMIC – INDUSTRY - TOURISM</b>		<b>Action Team:</b> Peter Quin, Brian Shelley, Kevin Reynolds		
<b>Strategy: <i>Bike Trails: Marlo/Orbost &amp; Bridge Across the Snowy</i> (Marlo)</b>				
<b>Council Plan Alignment: Liveability</b>				
<b>Action</b>	<b>Persons Responsible</b>	<b>Critical Dates</b>	<b>Performance Measures</b>	<b>Resources Required</b>



<b>ECONOMIC – INDUSTRY - TOURISM</b>		<b>Action Team:</b>		
<b>Strategy: <i>Tourism Brochure (Cabbage Tree Creek)</i></b>		Frances Foster, Noel Woods, Kathy Woods		
<b>Council Plan Alignment: Productivity</b>				
<b>Action</b>	<b>Persons Responsible</b>	<b>Critical Dates</b>	<b>Performance Measures</b>	<b>Resources Required</b>

<b>ECONOMIC – INDUSTRY - TOURISM</b>		<b>Action Team:</b>		
<b>Strategy: <i>Snowy River Lodge (Orbost)</i></b>		Wendy Nixon, Denise Lynn, Wanda Battel		
<b>Council Plan Alignment: Productivity</b>				
<b>Action</b>	<b>Persons Responsible</b>	<b>Critical Dates</b>	<b>Performance Measures</b>	<b>Resources Required</b>

<b>ECONOMIC – INDUSTRY - DEVELOPMENT</b>		<b>Action Team:</b>		
<b>Strategy: <i>Energy Sustainability Taskforce (Orbost)</i></b>		Peter Quin, Margot Reeve, Liz Mitchell, Greg Mac Namara, Tom Mc Shane, Suzanne Mac Namara, Brett Lynn, Wanda Battel, Maren Dixon, Maria Cardoso		
<b>Council Plan Alignment: Sustainability</b>				
<b>Action</b>	<b>Persons Responsible</b>	<b>Critical Dates</b>	<b>Performance Measures</b>	<b>Resources Required</b>

<b>ECONOMIC – INDUSTRY - DEVELOPMENT</b>		<b>Action Team:</b>		
<b>Strategy: <i>Power – Sustainable Energy Production and Distribution</i></b> <b>(Cabbage Tree Creek)</b>		Janine Scott, Noel Scott, Noel Woods, Kathy Woods		
<b>Council Plan Alignment: Sustainability / Liveability</b>				
<b>Action</b>	<b>Persons Responsible</b>	<b>Critical Dates</b>	<b>Performance Measures</b>	<b>Resources Required</b>

<b>ECONOMIC – INDUSTRY - DEVELOPMENT</b>		<b>Action Team:</b>		
<b>Strategy: <i>Shop Local – Purchasing &amp; Local Contractor Policies</i> (Orbost)</b>				
<b>Council Plan Alignment: Productivity / Sustainability</b>				
<b>Action</b>	<b>Persons Responsible</b>	<b>Critical Dates</b>	<b>Performance Measures</b>	<b>Resources Required</b>

<b>ECONOMIC – INDUSTRY - DEVELOPMENT</b>		<b>Action Team:</b>		
<b>Strategy: <i>Liaison Group (Marlo)</i></b>		Kevin Reynolds, Peter Foden, Harry Ferrier, Joady Chick		
<b>Council Plan Alignment: Sustainability / Productivity</b>				
<b>Action</b>	<b>Persons Responsible</b>	<b>Critical Dates</b>	<b>Performance Measures</b>	<b>Resources Required</b>

<b>ECONOMIC – INDUSTRY - DEVELOPMENT</b>		<b>Action Team:</b>		
<b>Strategy: <i>Industrial Land and Zoning (Orbost)</i></b>		Brett Lynn, David Perry, Denise Lynn		
<b>Council Plan Alignment: Productivity / Sustainability</b>				
<b>Action</b>	<b>Persons Responsible</b>	<b>Critical Dates</b>	<b>Performance Measures</b>	<b>Resources Required</b>

**ECONOMIC – INDUSTRY - DEVELOPMENT**  
**Strategy: *Environmental University & Bushfire Training Centre***  
**(Newmerella)**  
**Council Plan Alignment: Sustainability / Productivity**

**Action Team:**  
Tom Davies, Stephen Mathers

Action	Persons Responsible	Critical Dates	Performance Measures	Resources Required



<b>ECONOMIC – INDUSTRY - DEVELOPMENT</b>		<b>Action Team:</b>		
<b>Strategy: <i>Service Development</i> Newmerella)</b>				
<b>Council Plan Alignment: Sustainability / Liveability</b>				
<b>Action</b>	<b>Persons Responsible</b>	<b>Critical Dates</b>	<b>Performance Measures</b>	<b>Resources Required</b>

<b>ECONOMIC – INDUSTRY - DEVELOPMENT</b>		<b>Action Team:</b>		
<b>Strategy: <i>Fish Farm and Fungi Farm (Newmerella)</i></b>				
<b>Council Plan Alignment: Productivity</b>				
<b>Action</b>	<b>Persons Responsible</b>	<b>Critical Dates</b>	<b>Performance Measures</b>	<b>Resources Required</b>

<b>ECONOMIC – INDUSTRY - SKILLS</b>		<b>Action Team:</b>		
<b>Strategy: <i>Skills Database and Community Website (Orbost)</i></b>		Lillian Bishop, Rae Wilkinson, Peter Quin		
<b>Council Plan Alignment: Liveability / Productivity</b>				
<b>Action</b>	<b>Persons Responsible</b>	<b>Critical Dates</b>	<b>Performance Measures</b>	<b>Resources Required</b>

<b>ECONOMIC – INDUSTRY - SKILLS</b>		<b>Action Team:</b>		
<b>Strategy: <i>Community Website (Cabbage Tree Creek)</i></b>		Kathy Woods, Barry Butten, Betty Clarke, Lester Burge		
<b>Council Plan Alignment: Sustainability / Productivity / Liveability</b>				
<b>Action</b>	<b>Persons Responsible</b>	<b>Critical Dates</b>	<b>Performance Measures</b>	<b>Resources Required</b>

## **Community and Economic Profile**

# Contents

	Key Findings	4
1	Introduction	7
2.	Community	8
	2.1 <i>Resident Population</i>	8
	2.2 <i>Age Profile</i>	9
	2.3 <i>Resident Indigenous Population</i>	10
	2.4 <i>Births and Deaths</i>	11
	2.5 <i>Ancestry</i>	11
	2.6 <i>Households</i>	12
	2.7 <i>Income</i>	14
	2.8 <i>Pension and Benefit Recipients</i>	16
	2.9 <i>Need for Assistance</i>	17
	2.10 <i>Education</i>	18
	2.11 <i>Internet Usage</i>	19
	2.12 <i>Motor Vehicle Registrations</i>	20
3.	Economy	21
	3.1 <i>Employment</i>	21
	3.2 <i>Industry of Employment by Occupation</i>	23
	3.3 <i>Internal Migration</i>	24
	3.4 <i>Unemployment</i>	25
	3.5 <i>Businesses</i>	27
	3.6 <i>Business Entries and Exits</i>	28
	3.7 <i>Agriculture</i>	29

# Key Findings

## Population

- The resident population for Orbost (S) in 2006 was 8,183 persons. It is interesting to note that the population across the former Shire has only decreased by 98 persons over the past ten year period, a decrease of approximately 1.2 percent.
- Over the period 1996-2006 the profile of the population has changed. Notably:
  - The number of persons in the 0-4 years has increased by more than 100 per cent;
  - There has been decreases in the age groups 5-17 through to 35-44 years;
  - The remaining age groups have experienced a rise, with greatest being in the 55-64 years (approximately 26 percent).
- In the period 2004-2006 the 0-14 years age group makes up the highest percentage of the local population;
- The older age groups (55-85+ yrs) are increasing as a percentage of the resident population.
- The resident indigenous population reflects similar trends to the non-indigenous population. One key difference is that there has been a decrease in population across all age groups, with the 55+ age groups remaining relatively static in the ten year period.
- The births and deaths across Orbost (S) have maintained a stable trend of more births than deaths. This is consistent with the relatively stable population and minimal inward migration.
- The population in the Orbost district is multi cultural in its ancestry. There are residents from twenty three different nationalities that live in the area. Apart from Australian ancestry (which includes the indigenous population), the highest representation is from the United Kingdom (363 persons), the Netherlands (81), New Zealand (65) and Germany (55).
- Residents of Italian ancestry has decreased by approx. 45 percent over the ten year period;
- Residents of South African, U.S.A. and Thai ancestry have increased over the same period

## Households

- Overwhelmingly, the resident population in Orbost (S) lives in houses on separate parcels of land.
- There has been an increase in the number of people living in houses in the last ten years;
- In the corresponding period there has been a small decrease in the number of people residing in semi detached dwellings and other types of dwellings;
- There has been an increase of approximately 27 percent in the number of residents purchasing their house between 1996 and 2006;
- In the same period there has been a decrease in the number of residents renting their dwelling (approximately 12 percent)
- The number of building approvals for dwellings within the Orbost district increased year on year between 2002 (55 approvals) and 2004. In 2004 the number of approvals 'spiked'

to 85 approvals with building approvals for dwellings of 64 and 67 in 2005 & 2006 respectively.

- The approvals for units/semi detached dwellings were greater than houses in 2002 and 2003 (58 & 66 respectively) and almost the same for 2004-06 (including a similar 'spike' in 2004).

### **Income**

- The gross weekly income for families (by household) in Orbost (S) in 2006 recorded that the greatest percentage of households generates an income between \$350 and 650 per week. The next level of income per household is in the \$1,000-\$2,000 group.
- The gross weekly income for families (by household) in Orbost (S) in 2006 was between \$350 and 650 per week. The next level of income per household is in the \$1,000-\$2,000 group.
- There are a small number of households (128) in which the residents generate in excess of \$1,400 per week.

### **Education**

- In the period 1996-2006 the level of primary school participation has decreased from 957 children to 654 children (32 percent);
- There have been increases in the numbers of children and young adults attending all other types of education institutions.
- One indicator that provides an insight into the level of connectivity of the community is the use of the internet and telecommunications. Across Orbost (S) the number of dwellings with no internet connections is greater than the number of dwellings with some form of connection.

### **Employment**

- The number of people employed in Orbost (S) increased from 2,973 persons in 1996 to 3,222 persons in 2001 (approximately 8.5 percent). However, in the period 2001 – 2006 the number of people employed decreased by approximately 1.5 percent to 3,180.
- Agriculture, forestry and fishing continues to be the largest employer. However, employment in this sector has decreased by approximately 17 percent in the period 2001-06;
- There have been significant increases in the number of people employed in the construction, retail trade, education and training and the health and social assistance sectors between 1996 and 2006;
- There has been a significant decrease in the number of people employed in the manufacturing sector in the corresponding period.
- The occupation with the highest level of participation (managers) has experienced a decline of 10.5 percent between 1996 and 2006;
- There have been consistent increases in the sales, clerical and administrative, community and personal services and technicians and trades occupation groupings in the corresponding period;
- There has been a significant increase in the ration of females to males in the manager group;
- Females have maintained a significant representation in the community and personal service, sales and clerical occupation groups;



- Males continue to have significant representation in the technician and trades, machinery operators and drivers and the labourers occupation groups;
- A significant number of the managers (53 percent) are employed in the agriculture, forestry and fishing industry sector;
- The professionals occupation group are predominantly employed in the education and training and health care and social assistance industry sectors;
- Most occupations are reflected in employment numbers in appropriate industries, such as technicians and trades aligned with the construction industry.

### **Unemployment**

- In the period 2002-08 Orbost (S) has seen a decrease from 336 persons (9.1%) to 228 persons (5.1%), a drop of 4 percent over the period. There were small increases in the period 2002-2005, followed by substantial decrease between 2005 and 2008.

### **Businesses**

- A total of 318 businesses are classed as non-employing. These account for 64 percent of all registered businesses in the study area;
- Approximately 67 percent of all employing businesses employ 1-4 people;
- There are no businesses within the study area that employ more than 100 people
- The highest number of businesses (93) report a turnover in the range of \$200,000 to <\$500,000 turnover;
- There are 12 businesses within the study area reporting a turnover of \$2 million +;
- The highest number of businesses reporting a turnover of <\$25,000 per annum are in the agriculture, forestry and fishing and property and business services sectors;
- The communication services sector has only three businesses reporting their turnover and all businesses are in the <\$25,000 section
- Apart from 2004, there have been fewer non-employing business entries as there have been business exits;
- Conversely, employing businesses established in 2004 and 2005 exceeded the business exits for the corresponding periods. However, there was a significant increase in the number of business exits in 2006 which exceeded the number of business entries.

### **Agriculture**

- The most recent data highlights the following points:
  - Livestock production and slaughtering account for the highest local value (\$19,634,349 and \$19,858,185 respectively);
  - Crops account for the next highest local value (\$8,159,839)

# 1. Introduction

The purpose of this section is to provide a profile of the community and economy of Orbost and District. This profile includes population, employment, building and dwellings, industry sector and businesses. The profile will assist in guiding the recognition of opportunities and the development of strategies and activities for the Community Plan.

The data in this report has been sourced from the Australian Bureau of Statistics, Department of Planning and Community Development, East Gippsland Shire Council. In addition data was sourced from industry sector organisations, such as Gippsland Private Forestry and Dairy Australia.

The most up to date data has been obtained wherever possible. In many areas, the most current data is the 2006 Census information collected and published by the Australian Bureau of Statistics.

All references to 'Orbost' in this report include the participating townships of Newmerella, Cabbage Tree Creek and Marlo unless otherwise specifically referenced. In a number of areas, the information is for the former Orbost Shire which is a statistics collection district. All references to this data will appear as 'Orbost (S)'

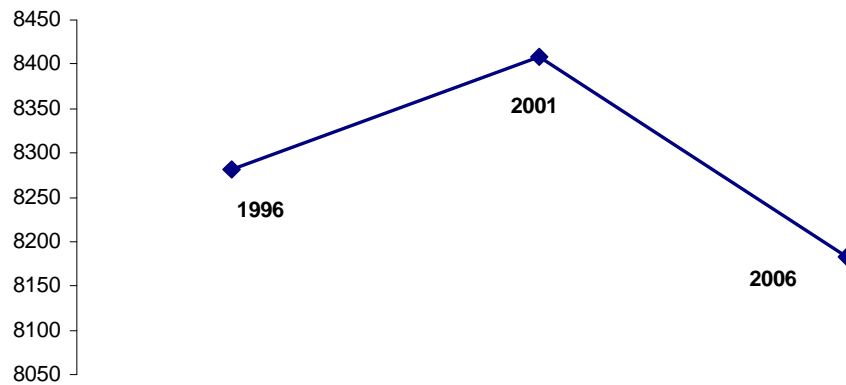
## 2. Community

### 2.1 Resident Population

The resident population for Orbost (S) in 2006 was 8,183 persons. It is interesting to note that the population across the former Shire has only decreased by 98 persons over the past ten year period, a decrease of approximately 1.2 percent.

As set out in Chart 1, the resident population in the township of Orbost has decreased by 121 persons over the corresponding period, a decrease of approximately 5.5 percent

**Table 1: Resident Population Orbost (S) 1996-2006**

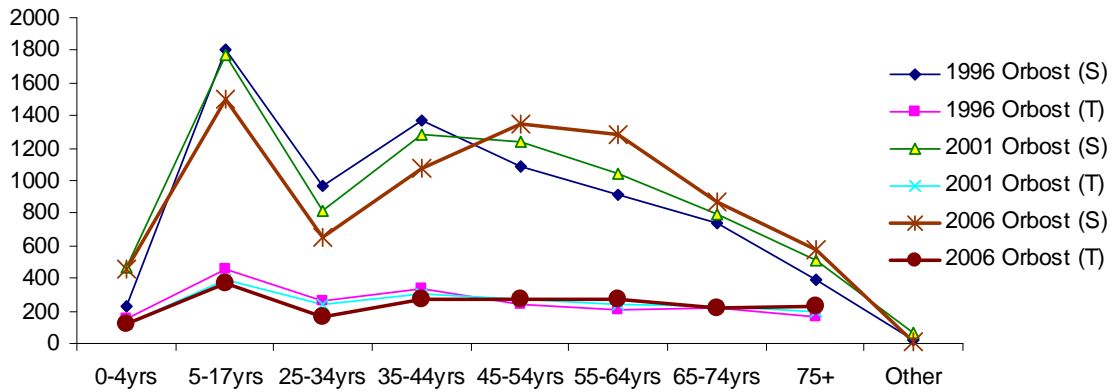


Source: ABS National Regional Profile

Over the period 1996-2006 the profile of the population has changed. Notably:

- The number of persons in the 0-4 years has increased by more than 100 per cent;
- There has been decreases in the age groups 5-17 through to 35-44 years:
- The remaining age groups have experienced a rise, with greatest being in the 55-64 years (approximately 26 percent).

**Table 2: Resident Population Orbost (S)&(T) 1996-2006 by Age Group**



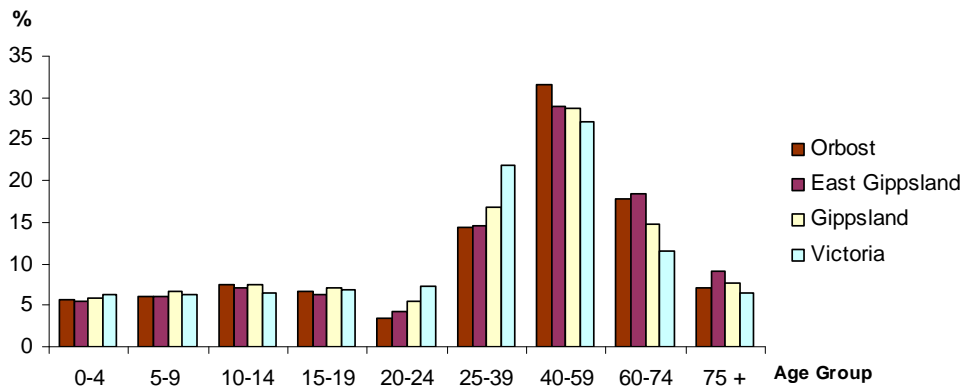
Source ABS National Regional Profile

**Chart 1: Resident Population: Orbost (S) 1996-2006 by Age Group**

		0-4yrs	5-17yrs	25-34yrs	35-44yrs	45-54yrs	55-64yrs	65-74yrs	75+	Other	Total
<b>1996</b>	<b>Orbost (S)</b>	<b>229</b>	<b>1805</b>	<b>968</b>	<b>1373</b>	<b>1083</b>	<b>915</b>	<b>734</b>	<b>387</b>	<b>24</b>	<b>8281</b>
	Orbost (T)	154	453	261	338	239	210	219	160		2171
<b>2001</b>	<b>Orbost (S)</b>	<b>469</b>	<b>1774</b>	<b>812</b>	<b>1287</b>	<b>1236</b>	<b>1043</b>	<b>791</b>	<b>510</b>	<b>62</b>	<b>8409</b>
	Orbost (T)	117	396	243	304	269	241	224	198		2116
<b>2006</b>	<b>Orbost (S)</b>	<b>461</b>	<b>1496</b>	<b>656</b>	<b>1073</b>	<b>1350</b>	<b>1280</b>	<b>868</b>	<b>578</b>	<b>16</b>	<b>8183</b>
	Orbost (T)	122	374	168	277	272	273	217	224		2050

Table 3 sets out a comparison of resident data for Orbost, East Gippsland, Gippsland and Victoria. As can be seen in the table, Orbost has a higher percentage of resident population in the 10-20 and 40-59 age groups when compared to the region and State. Notably, Orbost has a lower percentage of population in the 20-40 age groups.

**Table 3: Resident Population (%) for Orbost & Comparison Data 2006**



## 2.2 Age Profile

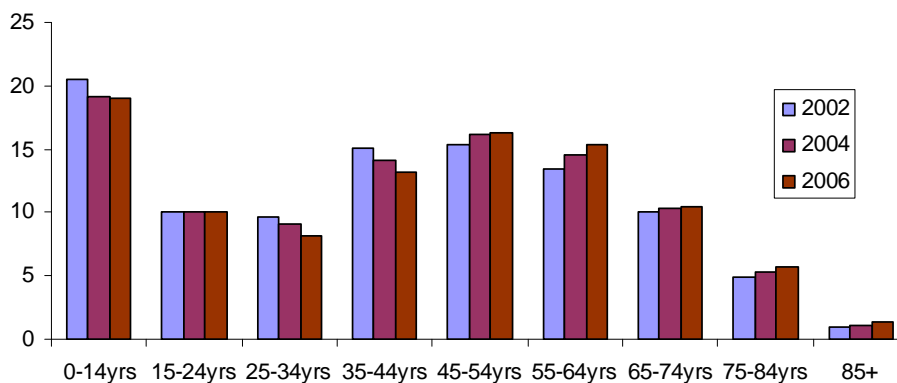
Tables 4 sets out the breakdown of age profiles as a percentage of the total for each of the three review periods. Some key points to note are:

- In all three periods the 0-14 years age group makes up the highest percentage of the local population;
- The older age groups (55-85+ yrs) are increasing as a percentage of the resident population.

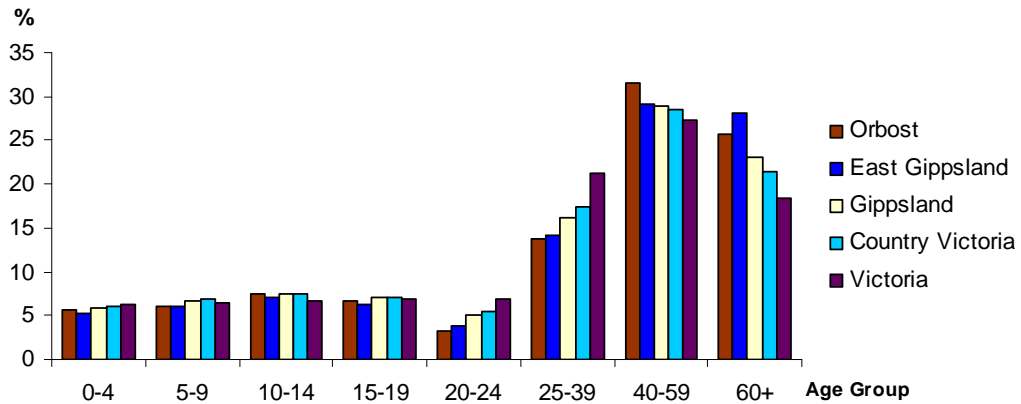
Table 5 sets out a comparison of Orbost with East Gippsland, Gippsland, Country Victoria and Victoria. The age profile is very similar to the Resident Population trends, notably:

- The age group 20-40 has a lower percentage of population compared to the region and the State;
- The 40-59 age profile is higher for Orbost when compared to the region and State averages.

**Table 4: Age Profile (%) for Orbost (S) 2002-2006**



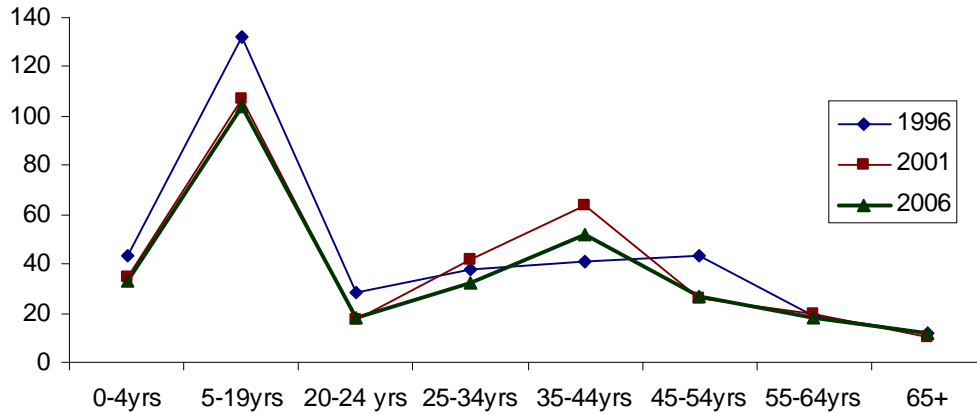
**Table 5: Age Profile (%) for Orbost (S) and Comparison Data 2006**



### 2.3 Resident Indigenous Population

The resident indigenous population reflects similar trends to the non-indigenous population. One key difference is that there has been a decrease in population across all age groups, with the 55+ age groups remaining relatively static in the ten year period.

**Table 6: Resident Indigenous Population 1996-2006**



### 2.4 Births and Deaths

The births and deaths across Orbost (S) have maintained a stable trend of more births than deaths. This is consistent with the relatively stable population and minimal inward migration.

**Chart 2: Births and Deaths Orbost (S) 2002-2006**

	2002	2003	2004	2005	2006
<b>Births</b>	92	81	94	80	77
<b>Deaths</b>	72	76	63	54	64

## 2.5 Ancestry

The population in the Orbost district is multi cultural in its ancestry. There are residents from twenty three different nationalities that live in the area. Apart from Australian ancestry (which includes the indigenous population), the highest representation is from the United Kingdom (363 persons), the Netherlands (81), New Zealand (65) and Germany (55).

Interesting points to note include:

- Residents of Italian ancestry has decreased by approx. 45 percent over the ten year period:
- Residents of South African, U.S.A. and Thai ancestry have increased over the same period

**Chart 3: Ancestry of Resident Population 1996-2006**

Origin	1996	2001	2006
Australia	7206	7086	6880
Bosnia/Herzegovina	3	3	0
Canada	8	10	0
China	6	5	6
Croatia	3	3	0
Fiji	4	3	3
Germany	49	51	55
Greece	7	9	7
Hong Kong	0	0	6
India	4	6	0
Indonesia	6	9	3
Ireland	14	7	12
Italy	53	49	29
Japan	0	3	3
South Korea	3	3	3
Malaysia	0	6	3
Malta	3	3	6
Netherlands	82	79	81
New Zealand	54	63	65
Papua New Guinea	7	4	7
Philippines	11	13	17
Poland	3	7	6
Singapore	0	3	3
South Africa	6	10	12
Sri Lanka	0	0	3
Thailand	0	3	7
United Kingdom	339	362	363
U.S.A.	3	8	14
Yugoslavia	3	0	0
Country Not Stated	319	471	493

## 2.6 Households

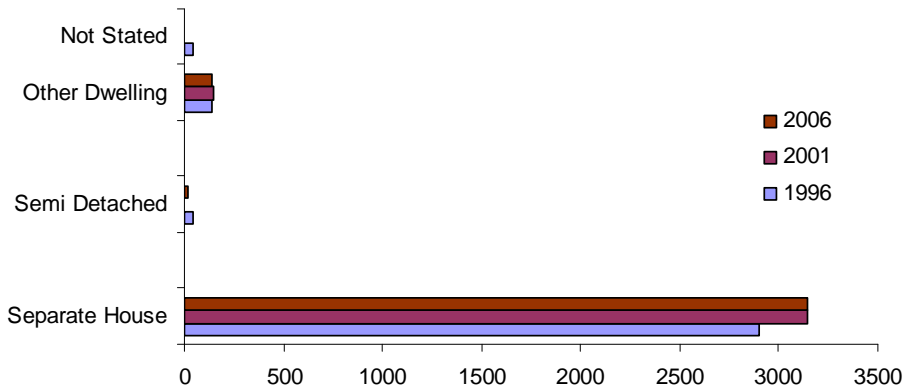
Overwhelmingly, the resident population in Orbost (S) lives in houses on separate parcels of land. The 'Other Dwelling' category includes residents living in caravans/mobile homes and on boats.

Points of note from Tables 7 & 8 include:

- There has been an increase in the number of people living in houses in the last ten years;

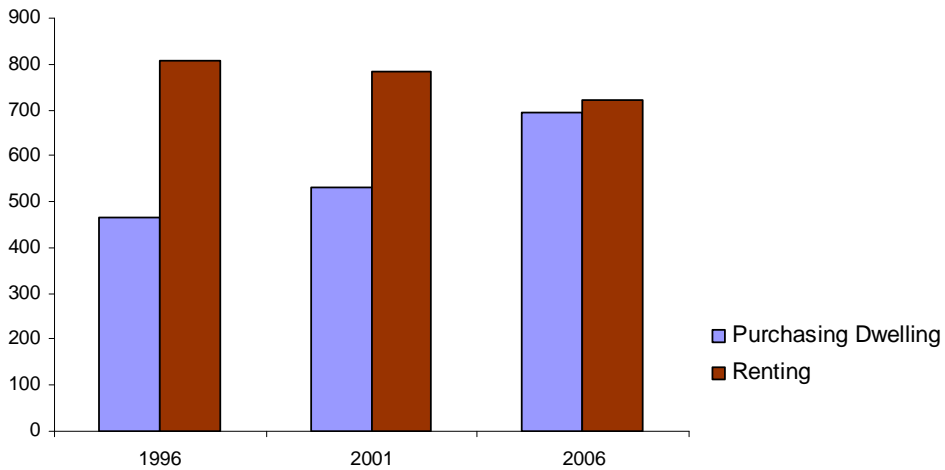
- In the corresponding period there has been a small decrease in the number of people residing in semi detached dwellings and other types of dwellings;
- There has been an increase of approximately 27 percent in the number of residents purchasing their house between 1996 and 2006;
- In the same period there has been a decrease in the number of residents renting their dwelling (approximately 12 percent)

**Table 7: Household Dwelling Type Orbost (S) 1996-2006**



Source: ABS National Register

**Table 8: Dwelling Purchase vs. Renting Orbost (S) 1996-2006**



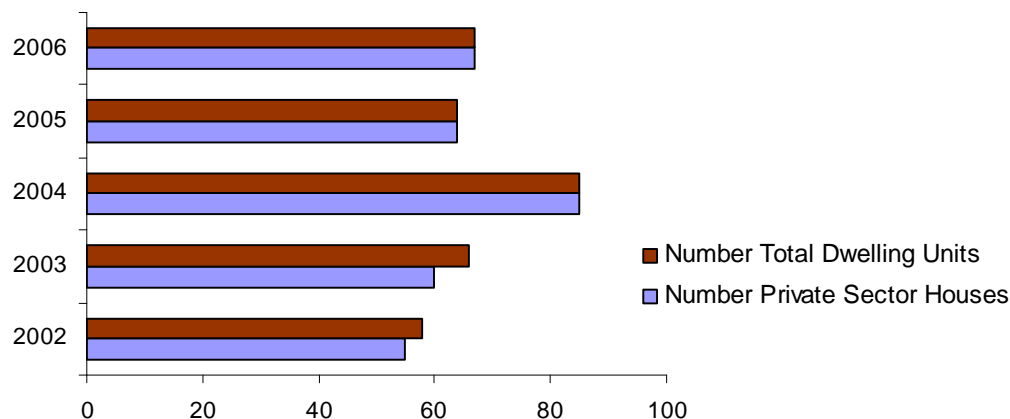
Source: ABS National Register

The number of building approvals for dwellings within the Orbost district increased year on year between 2002 (55 approvals) and 2004. In 2004 the number of approvals 'spiked' to 85 approvals with building approvals for dwellings of 64 and 67 in 2005 & 2006 respectively.

The approvals for units/semi detached dwellings were greater than houses in 2002 and 2003 (58 & 66 respectively) and almost the same for 2004-06 (including a similar 'spike' in 2004).



**Table 9: Building Approvals Orbost (S) 2002-2006**

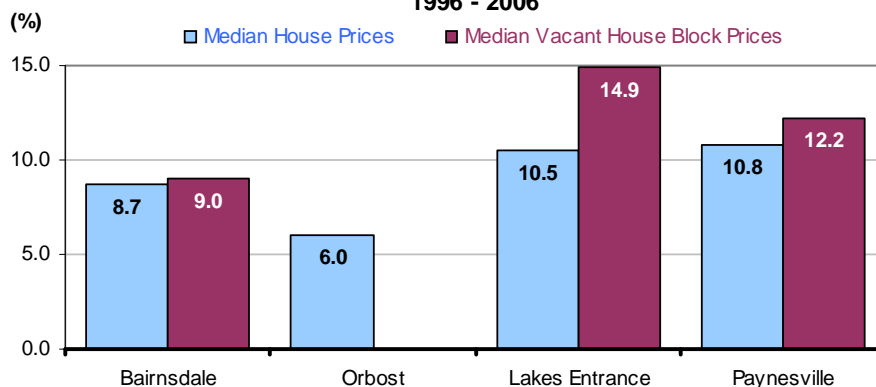


**Chart 4: Median House Prices 1996-2006**

Year	Bairnsdale (\$)	Orbost (\$)	Lakes Entrance (\$)	Paynesville (\$)	East Gippsland Shire (\$)	Country Victoria (\$)	Melbourne (\$)
1996	90 000	77 000	88 571	89 500	90 000	85 500	131 000
1997	85 000	50 000	87 500	99 000	85 000	88 000	142 000
1998	85 500	52 000	95 500	95 000	87 000	91 000	155 000
1999	88 000	51 000	95 000	103 000	93 000	100 000	174 000
2000	90 000	61 000	99 500	110 000	96 000	105 000	190 000
2001	95 000	70 000	111 500	125 000	105 000	121 000	225 000
2002	108 000	68 000	135 000	151 000	129 000	145 000	260 000
2003	159 999	94 250	177 000	210 000	162 500	174 000	295 000
2004	185 000	123 250	225 500	255 000	194 500	194 000	311 000
2005	199 000	135 000	247 500	250 000	210 000	210 000	320 000
2006	207 500	138 250	240 000	250 000	220 000	220 375	342 000
Compound Growth p.a. 1996 to 2006	8.7%	6.0%	10.5%	10.8%	n.a.	n.a.	n.a.

NOTE: n.a. Not available  
 SOURCE: Department of Sustainability and Environment

**COMPOUND GROWTH RATES  
 1996 - 2006**



SOURCE: Department of Sustainability and Environment

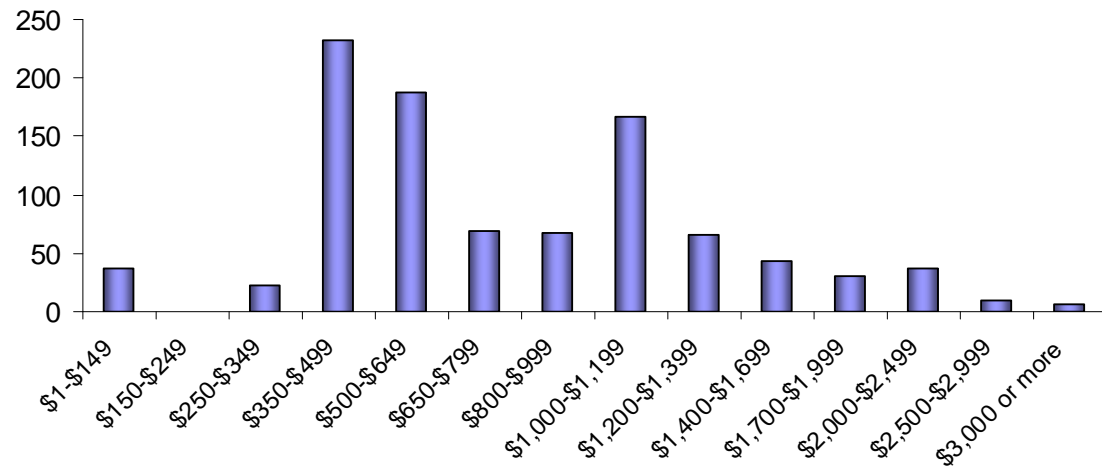
## 2.7 Income

The census figures note that there are 1,127 household in Orbost (S) in which the residents generate weekly income. The figures include salary/wages (full time and part time), income from other sources and income generated from residents working outside the area. It also includes income generated from residents not working but generating income.

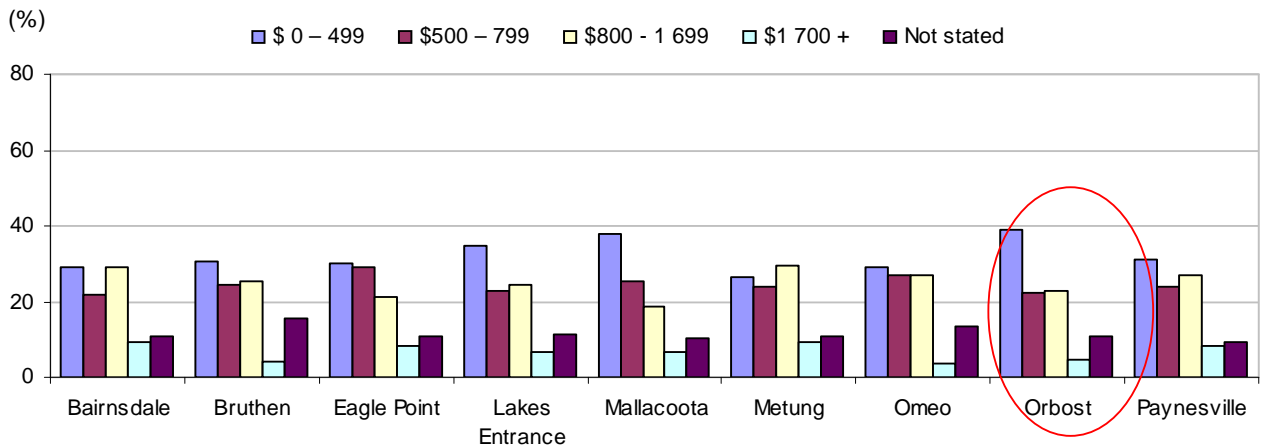
The gross weekly income for families (by household) in Orbost (S) in 2006 is set out in Table 6b. The greatest percentage of households generate between \$350 and 650 per week. The next level of income per household is in the \$1,000-\$2,000 group.

There are a small number of households (128) in which the residents generate in excess of \$1,400 per week.

**Table 10: Gross Family Income (Weekly) by Labour Force Orbost (S) 2006**

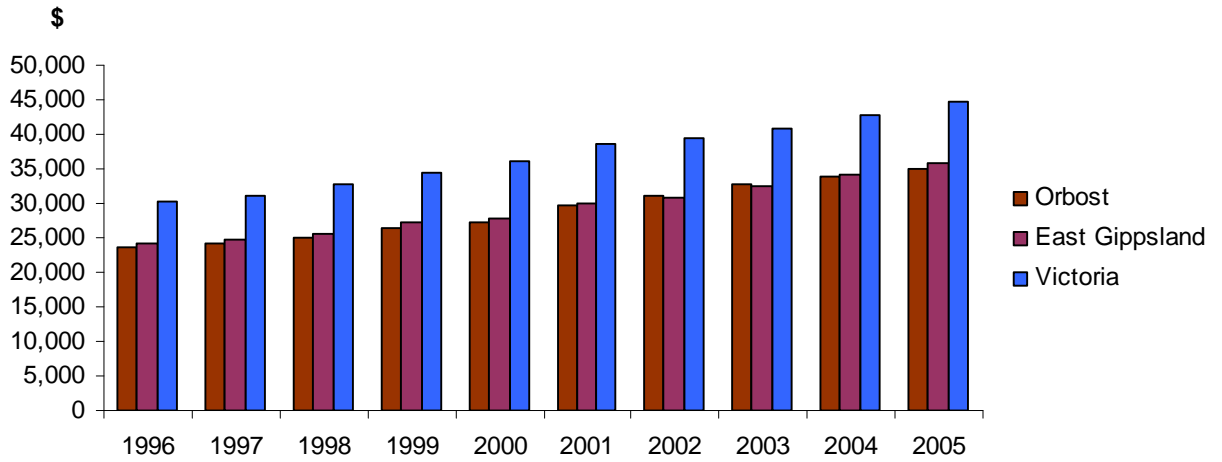


**Table 11: Weekly Household Income (% of Occupied Private Dwellings) 2006**



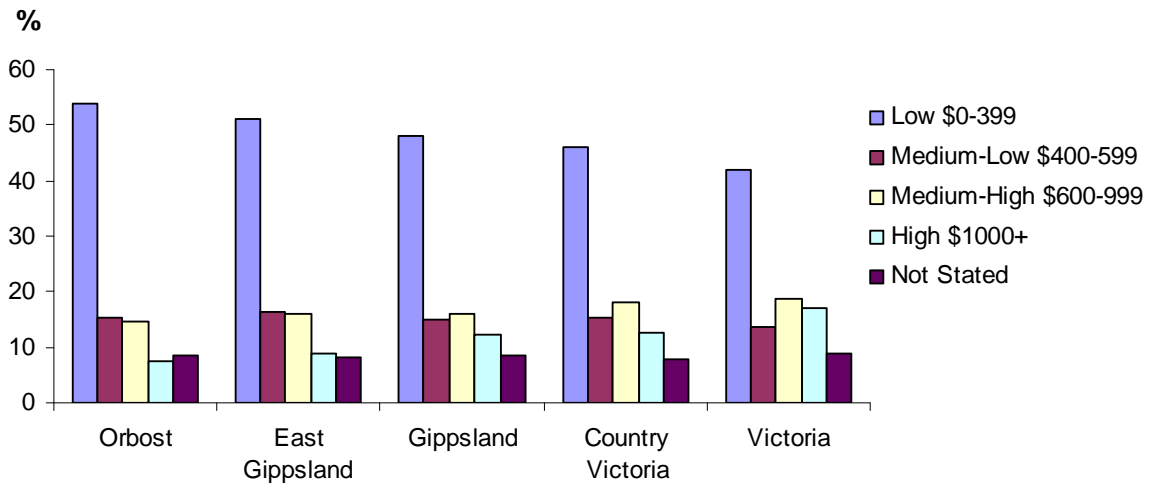
SOURCE: ABS, Census of Population and Housing 2006

**Table 12: Average Taxable Income of Individuals Orbost (\$) and Comparison Data 1996-2005**



Source: Australian Taxation Office

**Table 13: Weekly Individual Income Orbost (\$) and Comparison Data 2006**



Source: ABS Census of Population and Housing 2006

## 2.8 Pension and Benefit Recipients

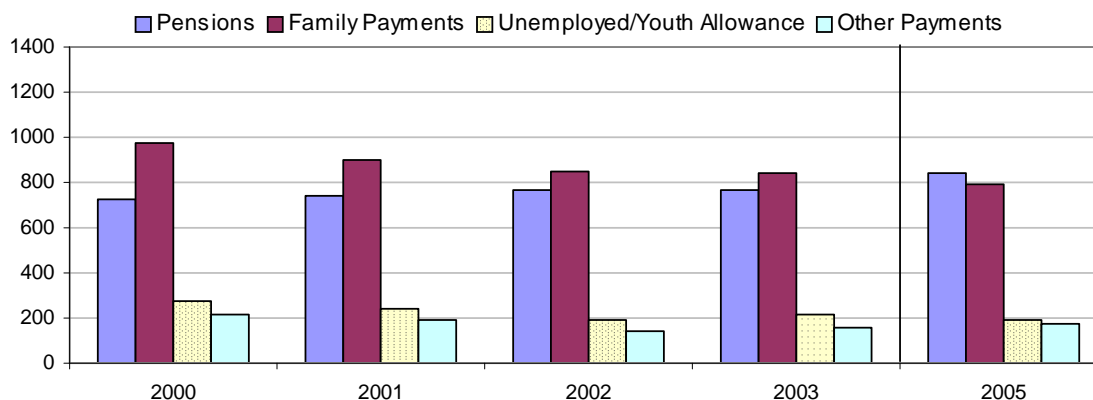
**Chart 5: Pension and Benefit Recipients Orbst (S) 1995 -2005**

Type of Pension and Benefit	Number of Recipients as at June:									
	1995	1996	1997	1998	1999	2000	2001	2002	2003	2005
<b>Pensions</b>										
Age/Mature Age Pension	429	420	444	432	463	466	472	479	486	508
Disability Support Pension	127	137	144	145	160	167	164	183	199	239
Carer Payment/Allowance						40	49	50	51	65
Widow Pension/Allowance	17	18	14	13	8	56	53	54	33	29
<b>Family Payments</b>										
Maximum Family Payment*	264	255	267	260	261	835	728	761	749	704
Parenting Payment Single	68	61	66	69	85	88	82	90	95	91
Childcare Benefit						52	87			
<b>Unemployment/Youth Allowance</b>										
Unemployment Benefits	204	220	203	185	254	-	-	-	-	-
Newstart MAA						<20	<20	<20	<20	<20
Newstart Allowance						163	146	113	125	115
Youth Allowance						109	99	81	94	74
<b>Other Payments</b>										
Sickness Allowance	5	10	3	5	3	<20	<20	<20	<20	-
Special Benefits	0	1	0	0	0	-	-	<20	<20	-
Rent Assistance						214	188	143	162	178

NOTE: \* Maximum Family Payment is paid to low income families. Previous to 1997 called the Additional Family Payment,  
2004 figures not available  
Where the pension/benefit type has been less than 20 recipients, data has not been included.

SOURCE: Metadata, CentreLink

**Table 14: Pension Benefit Recipients Orbst (S) 200-2005**



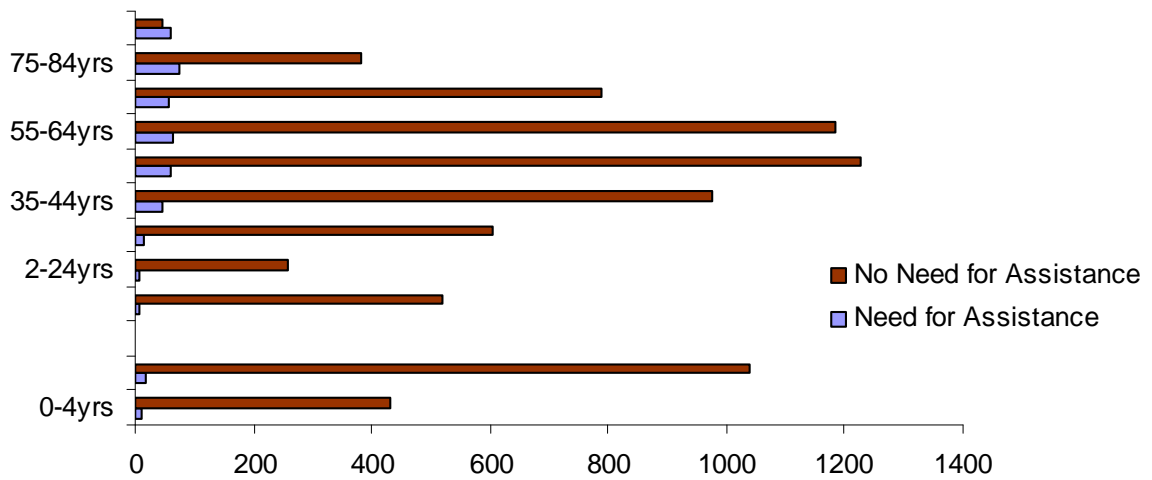
SOURCE: Metadata, CentreLink

## 2.9 Need for Assistance

An area that has recently been included in the census data is the number of residents that have a need for assistance. The need for assistance includes any activity that the resident undertakes with assistance from a third party – this would include carers, home service providers and external service providers.

Table 15 sets out the age groups that require assistance and, not surprisingly, the older age groups have the greatest need for assistance. It will be interesting to note the changes in this data at the next census.

**Table 15: Need for Assistance by Age Group Orbost (S) 2006**

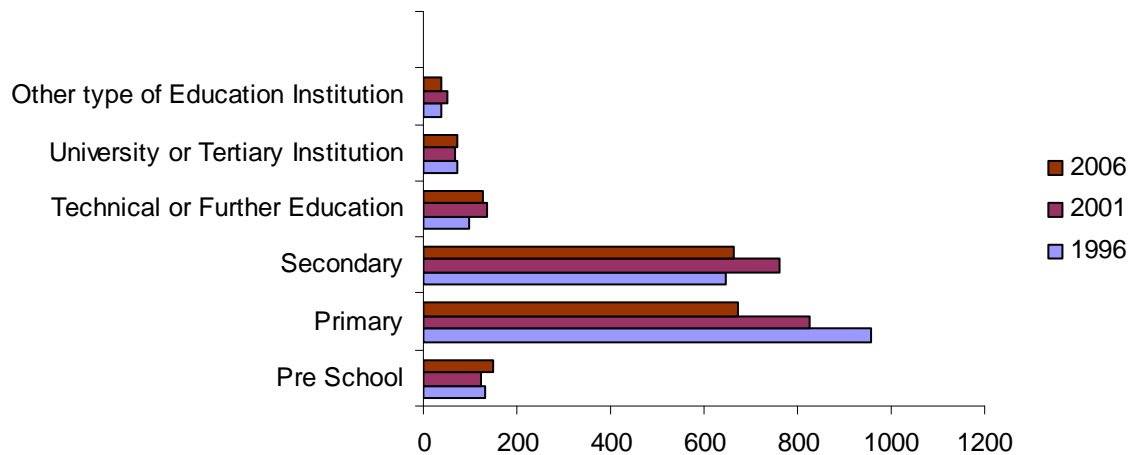


## 2.10 Education

A key measure that continues to receive a lot of attention by public policy makers is the level of education being undertaken in regional areas. Points of note in Orbost (S) include:

- In the period 1996-2006 the level of primary school participation has decreased from 957 children to 654 children (32 percent);
- There have been increases in the numbers of children and young adults attending all other types of education institutions.

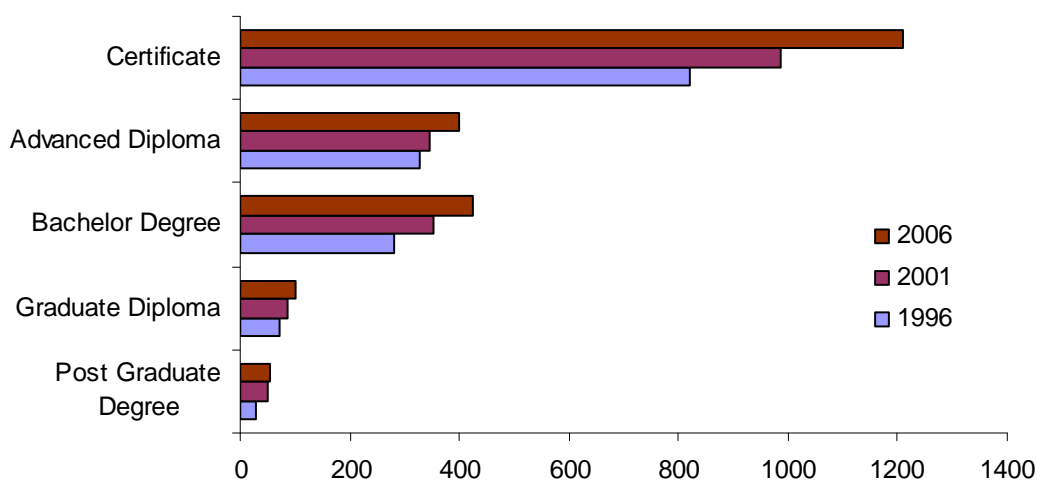
**Table 16: Education Institution Attendance Orbost (S) 1996-2006**



The information contained in Table 17 details the type of qualifications held by residents in Orbost (S). Overwhelmingly, the highest number of residents has attained a Certificate qualification. It is interesting to note that the greatest increase in qualifications is in the Certificate area.

It is important to note that this data covers all residents, that is, the data includes people who have moved into the area with a qualification and therefore does not reflect the qualifications attained by long term residents.

**Table 17: Non School Qualifications Orbest (S) 1996-2006**



**Chart 6: Highest Level of School Completed Orbest (S) and Comparison Data 2006**

		Yr 12 or equivalent	Yr 11 or equivalent	Yr 10 or equivalent	Yr 9 or equivalent	Yr 8 or below	Did not go to school	Not stated	Total
Orbest & District SLA	2006 No.	1 798	1 083	1 579	770	838	28	618	6 714
	%	26.8	16.1	23.5	11.5	12.5	0.4	9.2	100
	2001 No.	1 521	1 028	1 382	759	1 029	30	575	6 324
	%	24.1	16.3	21.9	12	16.3	0.5	9.1	100
	% change 01-06	18.2	5.3	14.3	1.4	-18.6	-6.7	7.5	
East Gippsland Shire	2006 No.	9 126	5 423	7 496	3 638	3 716	126	3 145	32 670
	%	27.9	16.6	22.9	11.1	11.4	0.4	9.6	100
	2001 No.	7 273	4 770	6 580	3 441	4 554	151	2 568	29 337
	%	24.8	16.3	22.4	11.7	15.5	0.5	8.8	100
	% change 01-06	25.5	13.7	13.9	5.7	-18.4	-16.6	22.5	
Gippsland	2006 No.	55 372	33 727	42 513	20 684	19 771	799	19 199	192 065
	%	28.8	17.6	22.1	10.8	10.3	0.4	10	100
	2001 No.	45 360	30 301	38 529	19 975	23 851	871	15 103	173 990
	%	26.1	17.4	22.1	11.5	13.7	0.5	8.7	100
	% change 01-06	22.1	11.3	10.3	3.5	-17.1	-8.3	27.1	
Country Victoria	2006 No.	334 561	183 370	222 120	109 427	106 781	5 109	99 612	1 060 980
	%	31.5	17.3	20.9	10.3	10.1	0.5	9.4	100
	2001 No.	n.a.	n.a.	n.a.	n.a.	n.a.	n.a.	n.a.	n.a.
	%	n.a.	n.a.	n.a.	n.a.	n.a.	n.a.	n.a.	n.a.
Victoria	2006 No.	1 752 303	548 812	630 950	288 132	334 084	43 627	384 126	3 982 034
	%	44	13.8	15.8	7.2	8.4	1.1	9.7	100
	2001 No.	n.a.	n.a.	n.a.	n.a.	n.a.	n.a.	n.a.	n.a.
	%	n.a.	n.a.	n.a.	n.a.	n.a.	n.a.	n.a.	n.a.

## 2.11 Internet Usage

One indicator that provides an insight into the level of connectivity of the community is the use of the internet and telecommunications. Chart 7 sets out the number of connections in dwellings across the Orbost district. As can be seen the number of dwellings with no internet connections is greater than the number of dwellings with some form of connection.

**Chart 7: Number of Internet Connections Orbost (S) 2006 (Excludes Business Connections)**

Connection	Number
No Internet Connection	1,630
Broadband	607
Dial-up	860
Other	16

## 2.12 Motor Vehicle Registrations

**Chart 8: Motor Vehicle Registrations Orbost (S) 2002-2006**

Type of Vehicle	2002	2003	2004	2005	2006
Passenger Vehicles	4,218	4,324	4,441	4,501	4,596
Campervans	32	36	35	42	41
Light Commercial Vehicles	1,744	1,808	1,819	1,850	1,880
Light Rigid Trucks	47	43	41	42	41
Heavy Rigid Trucks	269	271	261	255	254
Articulated Trucks	151	144	133	138	141
Non-Freight Carrying Trucks	9	10	12	13	16
Buses	72	70	67	67	69
Motorcycles	355	288	305	320	341
<b>Total Registered Motor Vehicles</b>	<b>6,897</b>	<b>6,995</b>	<b>7,113</b>	<b>7,228</b>	<b>7,378</b>

Source: ABS National Register 2006



## 3. Economy

### 3.1 Employment

The number of people employed in Orbost (S) increased from 2,973 persons in 1996 to 3,222 persons in 2001 (approximately 8.5 percent). However, in the period 2001 – 2006 the number of people employed decreased by approximately 1.5 percent to 3,180.

Chart 9 sets out the number of people employed across Orbost by industry classification. Points of note include:

- Agriculture, forestry and fishing continues to be the largest employer. However, employment in this sector has decreased by approximately 17 percent in the period 2001-06;
- There have been significant increases in the number of people employed in the construction, retail trade, education and training and the health and social assistance sectors between 1996 and 2006;
- There has been a significant decrease in the number of people employed in the manufacturing sector in the corresponding period.

**Chart 9: Industry of Employment by AZIC Code Orbost (S) 1996-2006**

Industry Sector	1996	2001	2006
Agriculture, Forestry & Fishing	650	650	538
Mining	22	12	22
Manufacturing	324	308	231
Electricity, Gas, Water & Waste Services	14	22	20
Construction	151	198	261
Wholesale Trade	78	99	67
Retail Trade	238	309	327
Accommodation & Food Services	234	288	292
Transport, Postal & Warehousing	141	149	144
Information Media & Telecommunications	24	23	26
Financial and Insurance Services	46	24	30
Rental, Hiring & Real Estate Services	18	16	28
Professional Scientific & Technical Services	59	87	64
Administrative & Support Services	49	71	65
Public Administration & Safety	181	106	150
Education & Training	268	313	316
Health Care & Social Assistance	249	315	350
Arts & Recreational Services	24	52	55
Other Services	96	89	98
<b>Total</b>	<b>2,973</b>	<b>3,222</b>	<b>3,180</b>

As can be seen in Chart 10 and Table 18 the breakdown of occupations shows the occupation with the highest participation is for managers followed by labourers and professionals. Points of note include:

- The occupation with the highest level of participation (managers) has experienced a decline of 10.5 percent between 1996 and 2006;
- There have been consistent increases in the sales, clerical and administrative, community and personal services and technicians and trades occupation groupings in the corresponding period;
- There has been a significant increase in the ration of females to males in the manager group;
- Females have maintained a significant representation in the community and personal service, sales and clerical occupation groups;
- Males continue to have significant representation in the technician and trades, machinery operators and drivers and the labourers occupation groups;

**Chart 10: Occupation by Category 1996-2006**

	1996			2001			2006		
	<i>Males</i>	<i>Females</i>	<i>Persons</i>	<i>Males</i>	<i>Females</i>	<i>Persons</i>	<i>Males</i>	<i>Females</i>	<i>Persons</i>
Managers	512	261	773	460	249	709	440	252	692
Professionals	170	204	374	204	243	447	175	269	444
Technicians and trades workers	281	57	338	307	64	371	326	73	399
Community and personal service workers	69	173	242	64	244	308	84	246	330
Clerical and administrative workers	50	217	267	40	246	286	49	267	316
Sales workers	45	109	154	57	148	205	74	162	236
Machinery operators and drivers	245	20	265	277	24	301	232	11	243
Labourers	322	137	459	340	148	488	287	165	452
Inadequately described/Not stated	61	40	101	71	38	109	39	29	68
<b>Total</b>	<b>1,755</b>	<b>1,218</b>	<b>2,973</b>	<b>1,820</b>	<b>1,404</b>	<b>3,224</b>	<b>1,706</b>	<b>1,474</b>	<b>3,180</b>

**Table 18: Occupation Category Orbest (S) 1996-2006**



### 3.2 Industry of Employment by Occupation

Chart 11 provides an interesting insight into the breakdown of where the people employed in occupations described above are working. Key points to note include:

- A significant number of the managers (53 percent) are employed in the agriculture, forestry and fishing industry sector;
- The professionals occupation group are predominantly employed in the education and training and health care and social assistance industry sectors;
- Most occupations are reflected in employment numbers in appropriate industries, such as technicians and trades aligned with the construction industry.

**Chart 11: Industry of Employment by Occupation Orbst (S) 2006**

CATEGORY	Managers	Professionals	Technicians & Trades	Comm & Personal Service	Clerical & Admin	Sales	Machinery Operators & Drivers	Labourers	Inadequate/ Not Described	Total
Agriculture, Forestry & Fishing	367	19	23	3	17	0	35	87	3	554
Mining	4	0	12	0	0	0	5	4	0	25
Manufacturing	20	6	51	3	22	10	33	85	3	233
Electricity, gas, water & waste water	0	4	4	0	4	0	4	5	0	21
Construction	36	3	107	0	21	0	51	47	4	269
Wholesale Trade	3	3	5	0	6	16	9	23	0	65
Retail Trade	83	5	35	5	11	164	4	29	4	340
Accommodation & Food Services	89	0	29	68	22	26	0	63	3	300
Transport, Postal & Warehousing	15	7	6	0	24	3	78	4	3	140
Information, Media & Telecommunications	0	0	6	0	0	8	0	0	0	14
Financial & Insurance Services	8	0	0	4	16	0	0	0	0	28
Rental, Hiring & Real Estate Services	3	3	0	0	8	15	0	3	0	32
Prof., Scientific & technical services	3	19	13	0	21	0	0	0	3	59
Administrative & Support Services	11	7	9	6	5	5	0	25	0	68
Public Admin. & Safety	15	36	9	35	32	0	9	8	10	154
Education & Training	21	186	7	64	31	0	4	14	0	327
Health Care & Social Assistance	19	117	17	125	43	0	0	38	0	359
Arts & Recreation Services	0	28	5	12	0	0	0	5	0	50
Other Services	6	4	55	6	16	0	4	8	0	99
Not Stated	12	4	4	6	9	0	11	11	37	94
<b>Total*</b>	<b>715</b>	<b>451</b>	<b>397</b>	<b>337</b>	<b>308</b>	<b>247</b>	<b>247</b>	<b>459</b>	<b>70</b>	<b>3231</b>

Source: ABS Census of Population and Housing 2006

\*The minor discrepancies in the numbers of people employed when compared to Charts 6 & 7 is due to some reporting of occupations in more than one sector

### 3.3 Internal Migration

Chart 12 sets out the number of people that have migrated into Orbst (S). The figures indicate a steady inward migration. Unfortunately detailed data is not recorded on migration out of Orbst so a meaningful comparison cannot be evaluated.

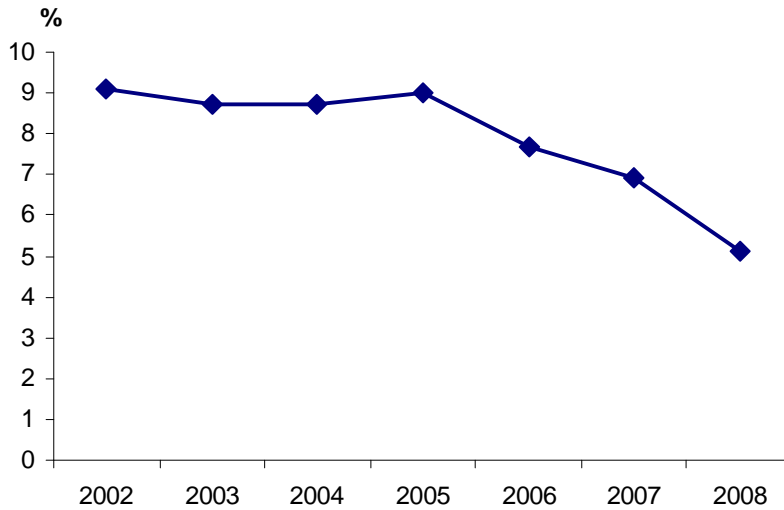
**Chart 12: Internal Migration 2006**

<b>Persons who lived at different address 1 year ago</b>	<b>13</b>
<b>Persons who lived at different address 5 years ago</b>	<b>34</b>

### 3.4 Unemployment

In the period 2002-08 Orbost (S) has seen a decrease from 336 persons (9.1%) to 228 persons (5.1%), a drop of 4 percent over the period. There were small increases in the period 2002-2005, followed by substantial decrease between 2005 and 2008.

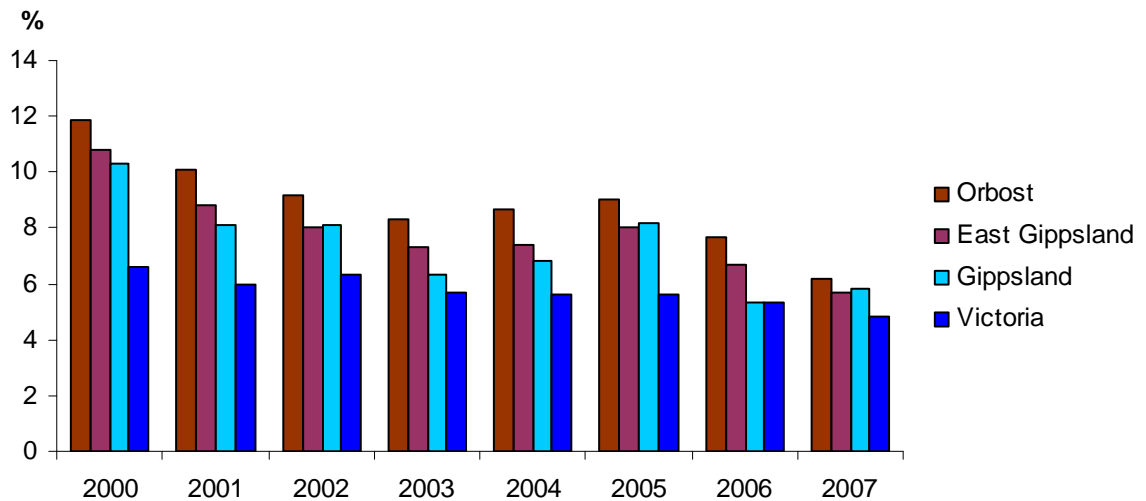
**Table 19: Unemployment Rate Orbost (S) 2002-2008**



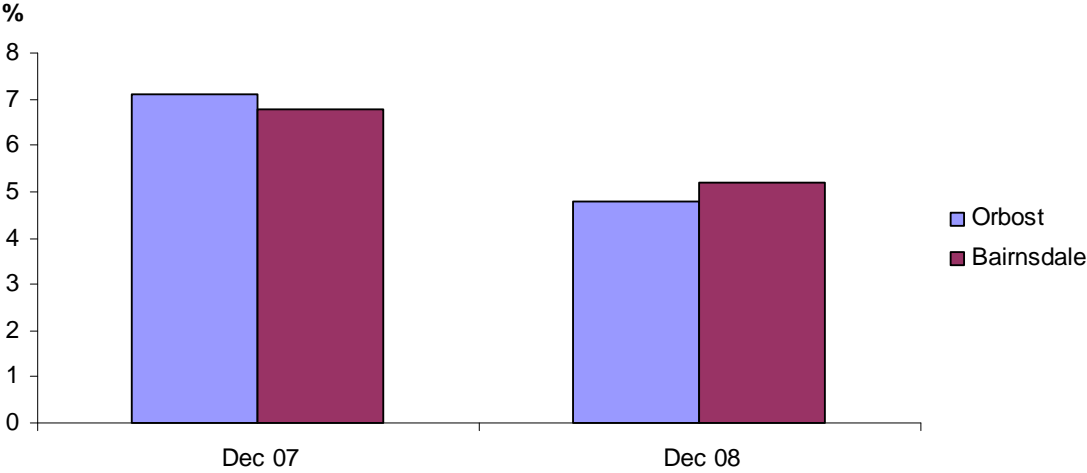
**Chart 13: Unemployment Persons and Rate 2002-2008**

	2002	2003	2004	2005	2006	2007	2008
Unemployed Persons	336	341	364	389	318	305	228
Unemployment Rate (%)	9.1	8.7	8.7	9	7.7	6.9	5.1

**Table 20: Unemployment Rate Orbost (S) and Comparison Data 2000-2001**



**Table 21: Unemployment Rate Orbst and Bairnsdale 2007/08**



### 3.5 Businesses

It is possible to examine a range of variables in relation to businesses on the Australian Business Register by postcode. It has therefore been possible to calculate the number, type, employment details and turnover for the study area. As can be seen in Chart 14, the agriculture, forestry and fishing sector has the highest number of businesses with communication and education having the least. Points of note include:

- There are 171 businesses registered as non employing in the agriculture, forestry and fishing industry sector which is significantly higher than any other sectors (the next highest is construction with 39 registered non employing businesses);
- Similarly, the agriculture, forestry and fishing sector accounts for the highest number of employing businesses (63) when compared to the other sectors. The next highest is the retail and transport and storage sectors with 30 employing businesses each;
- A total of 318 businesses are classed as non-employing. These account for 64 percent of all registered businesses in the study area;
- Approximately 67 percent of all employing businesses employ 1-4 people;
- There are no businesses within the study area that employ more than 100 people

**Chart 14: Employment Size Ranges - Orbost, Newmerella, Cabbage Tree Creek & Marlo, June 2006**

Type	Non Employing	1-4	5-19	20-49	50-99	100+	Total Employing	Total
Ag., Forestry & Fish	171	44	15	3	0	0	63	231
Manufacturing	9	3	0	0	0	0	3	12
Construction	39	12	3	0	0	0	5	54
Wholesale Trade	3	3	0	0	0	0	3	6
Retail Trade	24	21	6	0	3	0	30	57
Accom. Cafes & Restaurants	3	9	3	3	0	0	15	21
Transport & Storage	12	18	2	0	0	0	30	42
Communication Services	3	0	0	0	0	0	0	3
Finance & Insurance	9	0	0	0	0	0	0	9
Property & Business Services	33	6	3	0	0	0	9	41
Education	3	0	0	0	0	0	0	3
Health & Community Services	3	0	3	0	0	0	3	6
Personal & Other Services	3	3	0	0	0	0	3	6
Cultural & Recreational Services	0	0	3	0	0	0	3	3
<b>Total All Industries</b>	<b>318</b>	<b>120</b>	<b>48</b>	<b>9</b>	<b>3</b>	<b>0</b>	<b>180</b>	<b>498</b>

ABS: Australian Business Register

Note: Public Institutions/Organisations not included (e.g. Hospitals/Schools)

Another interesting data set in relation to businesses in the study area is the number of businesses in industry sectors determined by turnover. Key points to note include:

- The reference to turnover by businesses do not include public organisations/institutions;
- The highest number of businesses (93) report a turnover in the range of \$200,000 to <\$500,000 turnover;
- There are 12 businesses within the study area reporting a turnover of \$2 million +;
- The highest number of businesses reporting a turnover of <\$25,000 per annum are in the agriculture, forestry and fishing and property and business services sectors;

- The communication services sector has only three businesses reporting their turnover and all businesses are in the <\$25,000 section

**Chart 15: Businesses: Annual Turnover Ranges – Orbost, Newmerella, Cabbage Tree Creek & Marlo, June 2006**

Type	\$0- <25k	\$25- <50k	\$50- <75k	\$75- <100k	\$100- <150k	\$150- <200k	\$200- <500k	\$500- <1 mil	\$1mil <2 mil	\$2 mil +	Total
Ag., Forestry & Fish	15	27	42	24	27	21	48	15	9	3	231
Manufacturing	0	3	9	0	3	0	0	0	0	0	15
Construction	3	3	9	9	6	3	9	3	0	3	48
Wholesale Trade	0	0	0	0	3	0	0	0	3	0	6
Retail Trade	9	6	3	0	9	3	12	6	3	3	54
Accom. Cafes & Restaurants	0	0	3	3	6	3	6	0	0	0	21
Transport & Storage	0	3	0	3	3	6	15	9	0	3	42
Communication Services	3	0	0	0	0	0	0	0	0	0	3
Finance & Insurance	3	3	0	0	0	0	0	3	3	0	12
Property & Business Services	12	6	0	6	9	3	3	3	0	0	42
Education	0	0	0	0	0	0	0	0	0	0	0
Health & Community Services	0	0	0	0	3	0	0	3	0	0	6
Personal & Other Services	0	3	0	0	0	3	0	0	0	0	6
Cultural & Recreation Services	0	0	0	0	3	0	0	0	0	0	3
<b>Total All Industries*</b>	<b>45</b>	<b>54</b>	<b>66</b>	<b>45</b>	<b>71</b>	<b>42</b>	<b>93</b>	<b>41</b>	<b>18</b>	<b>12</b>	<b>489</b>

ABS: Australian Business Register

\*The discrepancy in total businesses between Charts 11 & 12 is due to non or incorrect reporting in relation to turnover.

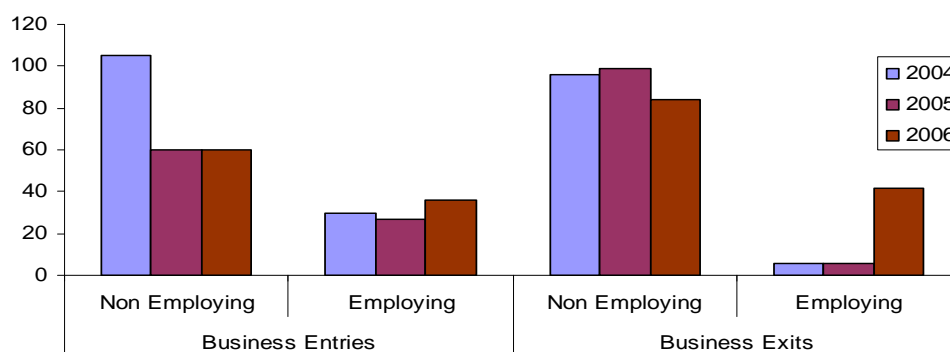
Note: Public Institutions/Organisations not included (e.g. Hospitals/Schools)

### 3.6 Business Entries and Exits

Table 22 sets out the number of business entries and exits in the period 2004-2006, determined by employing and non-employing businesses. Key points to note include:

- Apart from 2004, there have been fewer non-employing business entries as there have been exits;
- Conversely, employing businesses established in 2004 and 2005 exceeded the business exits for the corresponding periods. However, there was a significant increase in the number of business exits in 2006 which exceeded the number of business entries.

**Table 22: Business Entries & Exits Orbost (S) 2004-2006**





### 3.7 Agriculture

The recording of agricultural production and value data has undergone a number of changes within the ABS over the past decade and it is not possible (without very detailed research within ABS) to gain meaningful time series data.

Given the above, the most recent data highlights the following points:

- Livestock production and slaughtering account for the highest local value (\$19,634,349 and \$19,858,185 respectively);
- Crops account for the next highest local value (\$8,159,839)

**Chart 16: Value of Agricultural Commodities Orbost (S) and East Gippsland 2005-2006**

		Orbost (S)		East Gippsland
		2005/06	2001*	2005/06
<b>Agriculture:</b>	<b>Gross Value (\$)</b>	50,847,890		520,860,862
	<b>Local Value (\$)</b>	47,652,373	39,300,000	494,934,003
<b>Crops:</b>	<b>Gross Value</b>	9,249,792		106,860,398
	<b>Local Value</b>	8,159,839	4,300,000	95,999,000
<b>Vegetables:</b>	<b>Gross Value</b>	1,329,293		63,570,804
	<b>Local Value</b>	1,281,702		56,338,848
<b>Fruit:</b>	<b>Gross Value</b>	591,824		1,878,456
	<b>Local Value</b>	512,410		1,697,667
<b>Livestock Slaughtering:</b>	<b>Gross Value</b>	21,895,652		151,020,447
	<b>Local Value</b>	19,858,185	17,800,000	136,857,736
<b>Livestock Production:</b>	<b>Gross Value</b>	19,702,446		262,980,017
	<b>Local Value</b>	19,634,349	17,100,000	262,077,268
<b>Milk Production *East Gippsland*</b>	<b>Gross Value</b>			246,376,585
	<b>Local Value</b>			246,376,585
<b>Forest Production**</b>	<b>Gross Value</b>			122,838,000

ABS: Agricultural Commodities 2005/06

\* ABS: National Regional Profile 2000-2004

\*\* Gippsland Private Forestry: The Timber Industry, a Socio Economic Assessment

Note: **Gross Value:** Value of production at the point of sale, i.e. where it passes out of the agriculture sector

**Local Value:** Value of agricultural commodities at the point of production

### 3.8 Agricultural Land Tenure

**Chart 17: Agriculture Land Tenure Orbost (S) 2006**

	Estimate (ha)	Number of Establishments
<b>Area of holding: Total area</b>	117,173	358
<b>Area of holding: Land both owned &amp; operated</b>	89,330	343
<b>Area of holding: Crown land leased</b>	19,899	60
<b>Area of holding: Other land leased or rented</b>	7,776	64

Source: ABS Agricultural Summary 2006

## **Consultation and Forum Summaries**

# Orbost Forum Notes

## Strengths

- Location
- Natural resources
- Snowy river
- Water
- Climate
- Local produce
- Coastline
- Welcoming community – equity of opportunity
- Community spirit / connected to people
- Streetscape
- New people
- Good employers
- Tourism potential
- Good for families
- Volunteers
- Sporting facilities – i.e. clubs
- Health service
- Schools

## Challenges

- Apathy
- Ageing demographic – need to keep active and use the skills
- Taxis (lack of)
- Transport services
- Lighting in town
- Pathways and footpaths – for the whole town
- Childcare services
- Pre-school services
- Employment opportunities
- Getting youth involved
- Need for cheap (clean) energy
- Industrial estate and zoning
- Heated pool
- Fitness centre for all ages
- Arts – performance/dance
- Perception of ‘tyranny of distance’
- Vulnerability – energy
- Lack of stimulation – activities that can be undertaken

## **Magic Wand**

The following ideas and suggestions were generated from interviews, meetings with groups and taken at the forum. The intent of using the Magic Wand approach is to assist people to 'free up' their thinking and not be inhibited by barriers, perceived or real. The ideas and suggestions were:

- Have a return bus service from Orbost to Bairnsdale, with enough time in Bairnsdale to be able to undertake tasks (e.g. visit a specialist doctor);
- Address the infrastructure needs of the town, particularly the need for footpaths around the town and repairs to the existing footpaths. The elderly and disabled are experiencing falls;
- Start the process to develop a heated pool in the town, will benefit the health of residents, provide an attraction for visitors and activities for the young;
- Parking for motorhomes / sewerage dump points for motorhomes
- Lobby for the connection of natural gas to the town
- Lower speed limits in shopping areas
- More appealing highway signage showing what Orbost has to offer
- Get people to clean up after their dogs in public places
- Develop a sports and fitness complex: 25 metre heated pool, a hydrotherapy pool, an up to date gym, space for fitness classes
- Establish a small factory where retired men (and women) can manufacturer wooden products. Max Reynolds has a lot of timber that would be suitable for quality products
- Develop the Orbost region as a place of historical interest:
  - Interpretive signage for all school sites in the region
  - Publication of a historical drives booklet
  - Historical interpretation of significant sites, such as the Orbost and Marlo cemeteries
  - A heritage study of agricultural buildings (e.g. maize crates, slatted barns)
- Childcare facilities
- Energy production and supply to town – e.g. biomass, solar, geo-thermal, tidal
- Development of secondary industries associated with the regions primary industries. Better utilise the primary industry strengths
- Orbost/Marlo bike and pedestrian pathway
- Groups working together for the betterment of the Orbost community
- Reflection building at the Orbost cemetery
- Develop a wilderness walk (or walks)
- Better street lighting
- A 5 star resort on the butter factory site overlooking the Snowy river
- International airport

- Several evening restaurants, coffee shops and cheese shop
- Farmers market (like Candelo)
- Build a lodge on the Snowy River
- Establish a cinema and a theatre to hold plays and productions
- 24 hour police station
- Shoe shop
- New neighbourhood house
- More elderly home nursing spaces
- Temporary care services for under 60's (e.g. post operation at home)
- New museum with funding for staff
- Another electrical store
- Family day once a month
- More entertainment
- Backpacker hostel
- Youth community centre / blue light disco /drop in centre
- Development of adequate fire refuges
- Fire training support centre
- Quality dentist
- Return of passenger train
- Transform the town/village with attractive streetscapes
- Mail delivery in Newmerella
- 

## **Vision**

The following Vision Statements were prepared by the attendees:

- Orbost and district takes care of the people who live in and visit it
- To have groups working together with unity of purpose for the betterment of a sustainable Orbost community
- To have a lifestyle sustaining industry and community
- To have a dynamic, vibrant, enthusiastic community; young and old working together creating a self sufficient region

***“Orbost will be a vibrant, connected community working together for a sustainable, self sufficient future with an enviable lifestyle.”***

## **Projects**

- Energy sustainability taskforce
- Reflection sanctuary
- Shop local – purchasing policies and local contractor policy
- Working timber industry history centre
- Town beautification plan – including footpaths and recreation reserve
- Childcare and pre-school services and facilities
- Snowy river lodge
- Access and mobility strategy and plans
- Heated pool
- Multi function centre and activities
- Resource mapping of town
- Industrial land and zoning
- Historical plan including heritage lighting
- Tourism synergy group
- Orbost/Marlo trail
- Transport strategy
- Engagement / youth strategy
- Skills database and community website
- Wilderness walks
- Youth forum

## **Prioritised Projects (Votes) and participants**

- 1. Heated Pool (34)**  
Lillian Bishop, Gail Hume, Raeleigh Phillips, Yvonne Knight, David Perry, Sammi Geneikis, Derek Mason, Laura Munn, Suzanne MacNamara, Wanda Battel, Sue Robinson, Kylie Walker
- 2. Energy Sustainability Taskforce (18)**  
Peter Quin, Margot Reeve, Liz Mitchell, Greg MacNamara, Tom McShane, Suzanne MacNamara, Brett Lynn, Wanda Battel,
- 3. Orbost/Marlo Trail (18)**  
Andrew Martin, Raeleigh Phillips, Wanda Battel, Yvonne Knight, Heather Terrell, Gail Hume, Marlene Robb, Liz Mitchell, Kylie Walker
- 4. Youth Forum (12)**  
Lillian Bishop, Sammi Geneikis, Laura Munn
- 5. Wilderness Walks (11)**  
Yvonne Knight, Marlene Robb, Wanda Battel,
- 6. Reflections Sanctuary (11)**  
Judy Balmer, Max Balmer, Jocelyn Ingram
- 7. Transport Strategy (10)**  
David Perry, Gail Hume, Denise Lynn, Sammi Geneikis
- 8. Tourism Synergy Groups (10)**  
Jocelyn Ingram, Peter Quin, Suzanne MacNamara, Liz Mitchell
- 9. Industrial Land and Zoning (9)**  
David Perry, Brett Lynn
- 10. Historical Plan, including Heritage Lighting (8)**  
Wendy Nixon
- 11. Town Beautification Plan – including footpaths and Recreation Reserve (8)**  
Rae Wilkinson, Wendy Nixon, Yvonne Knight, Marlene Robb
- 12. Shop Local – Purchasing Policies and Local Contractor Policy (7)**  
No project participants
- 13. Multi Function Centre – including Entertainment and Activities (6)**  
Alicia Scobie-Webb, Sammi Geneikis, Laura Munn
- 14. Childcare / Pre-School Services and Facilities (4)**  
Margot Reeve, Alicia Scobie-Webb
- 15. Snowy River Lodge (3)**  
Wendy Nixon, Denise Lynn, Wanda Battel
- 16. Resource Mapping of Town (3)**  
No Project Participants
- 17. Skills Database and Community Website (1)**  
Lillian Bishop, Rae Wilkinson, Peter Quin
- 18. Working Timber Industry History Centre (1)**  
No Project Participants
- 19. Engagement / Youth Strategy (1)**  
Laura Munn, Sammi Geneikis

**20. Access and Mobility Strategy and Plans (0)**  
No Project Participants



# Marlo Forum Notes

## Strengths

- Beauty
- Not over developed
- The mouth of the Snowy River
- Dormitory town
- The wilderness
- Strong arts community
- Family tourism market
- Beaches
- The people – e.g. abilities
- Fishing
- A good area for retirement
- Friendly
- Good climate
- The rivers / Cape Conran
- The local walks
- A clean town
- The bird watching and wildlife
- Not too many people
- P.S. Curlip – opportunity for more tourism
- Fishing club
- Airport – key airport in area
- The pub
- Racecourse
- Coastal school

## Challenges

- Distance from Melbourne – time
- Cape Conran Boatramp – closed half the time, big impact on tourism
- Snowy River entrance – need for a safe navigable entrance
- Orbost and Shire needs take priority over Marlo
- Lack of support and involvement by Shire and DSE
- No interaction with Shire and DSE
- Infrastructure is deteriorating – e.g. roads
- Deteriorating infrastructure impacts on tourism
- Unsympathetic planning scheme
- Need better footpaths and lighting
- Curlip area needs infrastructure
- Fishing facilities – e.g. cleaning tables
- Bridges need repair
- Need coach parking at beaches – very limited access at present
- Environmental flows in the Snowy river

## **Magic Wand**

The following ideas and suggestions were generated from interviews, meetings with groups and taken at the forum. The intent of using the Magic Wand approach is to assist people to 'free up' their thinking and not be inhibited by barriers, perceived or real. The ideas and suggestions were:

- Marlo to retain its coastal village image
- More water flow in the river and estuaries
- Public facilities on the Conran end of town, near the walking tracks – e.g. Waterfield track and camping park kiosk
- Marlo road to be upgraded to B classification all the way around to Cabbage Tree
- Marlo road to be all weather not closed in flood time
- No camping along river
- Bike trail – Marlo to Orbost
- More lighting in streets and footpaths
- Facilities at Brodribb and fix access road
- Rubbish bins
- Public transport
- More walking tracks
- A roundabout at the junction of Conran Rd and Jorgensen St
- An avenue down the main street (like Mallacoota)
- Easy cycle access to Orbost, Pearl point and dock inlet
- Housing that is graded from the shoreline up the slope with no high rise
- Bus and car parking to the Curlip and other attractions
- Better access to features for less mobile people
- Encourage young families to live here

## **Vision**

The following Vision Statements were prepared by the attendees:

- Marlo is a great place to visit, wonderful to live in
- Marlo will be a happy place to live, visitor friendly in a natural environment

***“Marlo will maintain the peaceful and friendly environment for local residents and be a tourism friendly town, supported by good infrastructure and facilities”***

## Projects

- Viewing platforms along coast
- Bike trails – from Marlo to Orbost and bridge over the Snowy
- Townscape – to include bus parking, jetty area and retail precinct
- Liaison Group – with DSE, Gipps Ports, Parks Victoria, EGSC
- Walking Trails
- Boat Ramps – cleaning tables, parking, maintenance at Cape Conran, Marlo, F.C.
- Town Infrastructure
- Drop in Centre / internet café
- Marina
- Sporting Facilities
- Tourism and Arts Strategy
- Festival – Curlip / Snowy River
- Signage
- Wood Working Village

## Prioritised Projects (Votes) and Participants

1. **Boat Ramps (Marlo, Cape Conran, F.C.) – cleaning tables, parking, maintenance (13)**  
Kevin Reynolds, Susan Waddell, Harry Ferrier
2. **Town Infrastructure – footpaths, roads, drainage, lighting, beautification (12)**  
Anita Pike, David Pike, Clare Reynolds,
3. **Bike Trails- Marlo to Orbost and Bridge across the Snowy River (11)**  
Peter Quin, Kevin Reynolds, Brian Shelley
4. **Townscape – Coach Parking, Jetty Area and Retail Precinct (10)**  
Peter Quin, Brian Shelley, Susan Waddell
5. **Festival – Curlip / Snowy River (9)**  
Sue Jones, Judy Van der Vlugt, Harry Ferrier
6. **Walking Trails (8)**  
Clare Reynolds
7. **Tourism and Arts Strategy (7)**  
Peter Quin, Cynthia Boyle (Arts), Sue Jones, Judy Van der Vlugt
8. **Viewing Platforms Along Coast (5)**  
No Project Participants
9. **Liaison Group – DSE, EGSC, Parks Victoria, Gippsland Ports (5)**

Kevin Reynolds, Peter Foden, Harry Ferrier

**10. Wood Working Village (4)**

No Project Participants

**11. Signage (1)**

Harry Ferrier

**12. Marina (1)**

No Project Participants

**13. Drop In Centre / Internet Café (0)**

No Project Participants

**14. Sporting Facilities (0)**

No Project Participants

# Cabbage Tree Creek Forum Notes

## Strengths

- Community
- Safe and supportive
- Tourism potential – birds
- Arts community
- The general store
- Surf fishing – Bemm River
- Men's Shed
- Transport access – interstate buses stop here
- Door to door mail and garbage collection
- Have a town fire safety plan

## Challenges

- Community infrastructure – no hall or community centre
- Very limited employment opportunities
- Poor telecommunication and television infrastructure
- No town plan – e.g. parking
- Old highway stopping area is a mess – a shire responsibility
- Need sign posting
- Region needs greater controlled burns
- Dangerous for people on bikes – need a verge
- No reference of Cabbage Tree Creek on Council website
- No CFA facilities
- Unsafe entries to highway from side roads
- The only bus shelter leaks
- There is a constant threat of the single payphone being removed

## **Magic Wand**

The following ideas and suggestions were generated from interviews, meetings with groups and taken at the forum. The intent of using the Magic Wand approach is to assist people to 'free up' their thinking and not be inhibited by barriers, perceived or real. The ideas and suggestions were:

- Barbeque and recreation reserve to access creek with footbridge across highway
- Community hall to become a centre for community activities
- More signposting and awareness of towns/districts – facilities shown to tourists. E.g. very few people realize how close C.T.C is to the surf
- Get the hall up and running
- Tennis court repaired
- Better access to the shop
- Bus shelter other end of town
- Very dangerous entering highway from Woods road
- Keep pay phone
- More controlled burning
- Lester wants an apprentice
- Bike verge on highway
- Reference to C.T.C. on Shire website
- Truckstop at store area
- Communications and telecommunications need significant upgrades
- Picture show for kids and adults
- Need sports facilities, playground and entertainment area
- A bus to do Conran, Marlo, Orbost run
- Better tourism signage for 30km radius
- Create small business/commercial precinct to enhance employment
- Create walkway to link shop with western end of town
- Improve bus pull off area
- Create more tourism accommodation
- Start nature based tourism businesses, e.g. bike rides, 4wd tours
- Sustainable energy grid – possibly C.T.C. operating independent of the energy grid??
- Fire fighting facility
- Re-align and beautify embankments both sides of the Princes Highway
- Low cost tourism facilities, e.g. backpackers, camping facilities
- Promotion of nature based tourism
- Sustainable skills base – promotion and maintenance of old skills

## Vision

The following Vision Statements were prepared by the attendees:

- Cabbage Tree Creek will not lose its beauty and peaceful setting but safer, with more community facilities and the quality of lifestyle sustained
- Cabbage Tree Creek will be safer and have an improved quality of lifestyle
- Cabbage Tree Creek will be a small, sustainable and passionate community

***“Cabbage Tree Creek will improve the amenities and infrastructure to provide a safe and sustainable environment without compromising the quality of lifestyle enjoyed by residents”***

## Projects

- Power – sustainable energy production and distribution
- Telecommunication improvement project
- Fire – service and other
- Signage – tourism and local points of interest
- Tourism brochure
- Community website
- Community bus
- Clean up old Princes highway
- Community Hall – get up and running with toilets
- Move the highway
- Highway review – safety and speed limits
- Bridge for pedestrians
- Tennis court, recreation facilities (e.g. playground)
- Township Plan

## Prioritised Projects (Votes) and participants

1. **Community Hall – Renovation and Toilets (20)**  
Betty Clarke, Noel & Kathy Woods, Linda & Chris Swan, Christine & Lester Burge, Beryl & Bob King. Irene & Barry Butten, Susanna Brady
2. **Highway Review – Safety and Speed Limits (14)**  
Pete & Jo Fischer, F. Foster, B. Clarke, N. Woods, Scott Campbell-Smith
3. **Telecommunications Improvement Project (13)**  
Frances Foster, Barry Butten, Noel Woods, Betty Clarke, Peter and Jo Fischer
4. **Township Plan (8)**  
Noel and Kathy Woods
5. **Bridge for Pedestrians (8)**

Noel and Kathy Woods, Irene Butten

6. **Power – Sustainable Energy Production and Distribution (5)**  
Janine Scott, Noel and Kathy Woods
7. **Fire – Services and Other (5)**  
Janine and Noel Scott, Noel Woods
8. **Clean up Old Princes Highway (4)**  
Wendy and Kevin Burns, Irene and Barry Butten, Noel Woods
9. **Community Website (3)**  
Kathy Woods, Barry Butten, Betty Clarke, Lester Burge
10. **Community Bus (2)**  
Noel Woods
11. **Tourism Brochure (1)**  
Frances Foster, Noel Woods, Kathy Woods
12. **Signage – Tourism and Local Points of Interest (0)**  
Noel Woods
13. **Tennis Court / Recreation Area (0)**  
No Project Participants
14. **Move Highway (0)**  
No Project Participants



# Newmerella Forum Notes

## Strengths

- Highway – lot of passing traffic
- Scenic / views
- Beach
- Magnificent place to live
- People / strong community – lot of support
- Water – sea / fresh / treated
- Gas at doorstep
- Recreational grounds
- School
- Rail trail
- Snowy River – icon
- Climate – good for growing
- HSR Seeds
- Wetlands – flora and fauna
- Broadband
- Heritage and history
- Diversification of transport
- Log inventory capability
- Sawmill – strong business
- Artists
- Orbost show

## Challenges

- Employment – lack of
- Public transport
- Struggle to get heard by Council – different to the past
- “world ends at Lakes Entrance” – centralized nature of Council and services
- Recreational facilities
- Consideration of future growth – land subdivision
- Further education

## **Magic Wand**

The following ideas and suggestions were generated from interviews, meetings with groups and taken at the forum. The intent of using the Magic Wand approach is to assist people to 'free up' their thinking and not be inhibited by barriers, perceived or real. The ideas and suggestions were:

- No major industrial development
- Improved tourist facilities – toilets, picnic areas
- Sealed footpaths – connected with store, post office, showgrounds
- Beautification of entry points (both ends) on highway
- Pedestrian underpass / overpass
- Grandview lookout – concept developed including story board and history of area. Fence and seating
- Linked to rail trail
- Tables and seats along the rail trail
- Link rail trail to Marlo via Lochend and bridges
- Bike track from Snowy river bridge to Devils backbone with swing bridge across Snowy river then bike trail to Marlo
- Bike trail from school to Grandview lookout, showgrounds and rail trail
- Beach to bush walking tracks, Snowy river
- Landscape highway strips
- Storyboard on history of area, aboriginal history and 'What's on in Newmerella and Orbost'
- Tennis courts attached to school
- Walking track around Corringale beach and bushland areas – Lake Corringale and Corringale Creek
- Community hall attached to school
- Environmental science university
- A major industry to capitalize on industrial gas supply
- Move intersection to fire brigade
- A great walking track – Corringale to Lakes Entrance (entrance to entrance)
- Restaurant (slow food)
- Pedestrian crossing – underpass
- Extend school community hall

## **Vision**

The following Vision 'Story' was prepared by the attendees:

"Driving into Newmerella from Nowa Nowa we slowed down to the regulated 60klh which gave us time to note the well signed and landscaped entry into this vibrant village with people and children on bikes travelling on the shared foot/bike paths either side of the highway; saw the well facilitated free stop for caravaners (that we remembered was advertised in the on-line caravaner's Directory).

We see the public toilet facilities as well as the manned coffee break stop; and further on we noted the overpass over the highway to allow children and others to cross the busy highway, the slow food restaurant, with parking facilities for B-Double trucks which in the past caused such traffic hazards when they stopped for food outside the Shell Service station (where we could stop to swap the batteries in our vehicle); noticed that the intersection to Corringale Road had moved closer to where the CFA fire station has been all this time.

We also noted the directions to the shared School/Community centre and that there were story boards along the way that if we got off the highway and went into the side street we could read the story boards at our leisure; and noted that there was a historical museum covering the timber industry in the area which we took a mental note to visit as soon as possible.

We decide to get off the highway and go and visit the Grand View look out and what a view it was that led us to take some digital photos, before we decide to go back and have a pleasant lunch al fresco style in the attractive restaurant and it was there while we were waiting for our meal to be cooked that we wandered around and found some more story boards about this community.

They impressed us with their vision of what a small village ought to do to attract the attention of a vehicle full of passing tourists eager to learn something new about the vibrancy of East Gippsland."

For the purposes of the Plan, the above story is summarised in the following Vision statement:

***"Newmerella will develop a range of resident and tourist infrastructure in the township to encourage visitation by tourists and enhancement of residents' amenities."***

## **Projects**

- Townscape – walkways, bike trail, bus stop, beautification, parking for trucks
- Service development
- Rail trail – link to Marlo
- Rest area / restaurant
- Tennis Courts and Community hall – incorporate with school
- Walking tracks
- Fish farm
- Fungi farm
- Working timber museum centre
- Environmental university / bushfire training centre

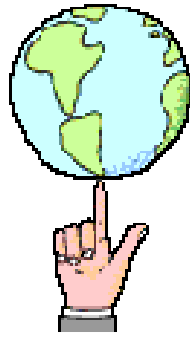
\* Glenview Lookout project – already underway and not included

## **Prioritised Projects (Votes) and Participants**

- 1. Townscape - walkways, bike trail, bus stop, beautification, parking for trucks (7)**  
Heather Terrell, Jason Griebenow, Jean Leatham, Glenn Herbert, Tom Davies
- 2. Rail trail link to Marlo (4)**  
No Project Participants

- 3. Environmental university / bushfire training centre (4)**  
Tom Davies, Stephen Mathers
- 4. Tennis Courts and community hall - incorporate with school (4)**  
Stephen Mathers, Glenn Herbert
- 5. Working timber museum centre (3)**  
Tom Davies
- 6. Service development (3)**  
No Project Participants
- 7. Rest area / restaurant (2)**  
No Project Participants
- 8. Walking tracks (1)**  
No Project Participants
- 9. Fish farm (1)**  
No Project Participants
- 10. Fungi farm (1)**  
No Project Participants

## **Appendix 1: Forum Flyer**



# ORBOST & DISTRICT COMMUNITY PLAN

Do YOU have ideas about the future  
of our community?

**As a community  
WE need to plan for the future WE want.**

To help that process, the East Gippsland Shire Council is supporting  
the development of a **Community Plan**.

A series of Community Forums have been planned for Orbost,  
Newmerella, Marlo and Cabbage Tree Creek.

The remaining dates and venues are:

- \* **Orbost** – Wednesday 16<sup>th</sup> September at 6.00pm,  
Theatrette, Orbost Secondary College
- \* **Cabbage Tree Creek** – Thursday 17<sup>th</sup> September at  
6.00pm, General Store

Finger Food (hot and cold) will be supplied at each forum

Everybody in the local community is invited to attend and participate in the  
discussions and raise ideas and projects.

If you cannot attend or would feel more comfortable raising your issues or  
projects outside the forums, you can:

1. Contact Liz Mitchell, Chair of the Steering Committee 0428556088  
or Bruce Connolly, Project Facilitator, 0418516358 OR
2. Complete an issue/project submission form at the Shire Offices in Orbost  
and leave it for collection

If you have any questions about the forums please call either Liz or Bruce.

Supported by  
the Victorian  
Government



**Appendix 2: Forum Attendees**

## Forum Attendees

### Orbost

May Leatch  
Leanne Bridges  
Lillian Bishop  
Margaret Smith  
Dan Terrell  
Heather Terrell  
Gail Hume  
Wendy Nixon  
Marlene Robb  
David Perry  
Bill Fletcher  
Gary Squires  
Suzanne McNamara  
Greg McNamara  
Jenny Heyne  
Barry Aspinall  
Kylie Walker  
Sue Forward  
Rene Sundermann  
Lee Holmes  
Jocelyn Ingram  
Max Balmer  
Judy Balmer  
Rae Wilkinson  
Sue Robinson  
Yvonne Knight  
Xenia Radic  
Denise Lynn  
Barbara Heiss  
Wanda Battel  
Peter Quin  
Coreena Healey  
Vicki Everett  
Margot Reeve  
Laura Munn  
Sammi Geneikis  
Cr. Marianne Pelz  
Raeleigh Phillips  
Heather Macalister  
Brett Lynn  
Alicia Scobie-Webb

### Marlo

Sue Waddell  
Clare Reynolds  
Anita Pike  
David pike  
Kevin Reynolds  
Cynthia Boyle  
Gil Richardson  
Heather Richardson  
Reno Dozzi  
Harry Ferrier  
Sue Jones  
Margaret Adams  
J. Bush  
Peter Foden  
Judy Van der Vlugt  
Catrynes Van der  
Vlugt  
Brian Shelley  
Lyn Lewis  
Linda Peacock  
Jo Darcy  
Coral Van Ekeren

### Newmerella

Stephen Mathers  
Jason Griebenow  
Jean Leatham  
Robin Sutton  
Tom Davies  
Cr. Marianne Pelz  
Glenn Herbert  
Heather Terrell

### Cabbage Tree Creek

Noel Woods  
Kathleen Woods  
Jo Fischer  
Pete Fischer  
Frances Foster  
Linda Swan  
Chris Swan  
Susanna Brady  
Scott Campbell-Smith  
Lester Burge  
Christine Burge  
Wendy Burns  
Kevin Burns  
Betty Clarke  
Barry Butten  
Irene Butten  
Beryl King  
Bob King  
Janine Scott  
Noel Scott



**Appendix 3: Survey Respondents**

The following people responded to the survey. These people that completed the survey are in addition to the forum participants that completed the survey. In total 175 surveys were returned.

Residents of Lochiel House

Sarah Pinkerton

Lindsay Allen

Julia Griffith

Judith Weatherall

Belinda Jolly

Maria Cardoso

Wendy Shepherd

Maren Dixon

Wanda Battel

Derrick DeVries

Pamela DeVries

Dorothy Perry

Janine Hooper

Shelley Sztynnda

Phil Mitchell

Neil Joiner

Lucia Smith

Augusta Trurnissouf

Albie

Fiona McDermott

Scott Woerz

Tristi Woerz

Joady Chick

Ian Jones

Bernadette Hammond

Paula Thexton

Audrey Van Den Berg

Gail Wright

Trish Reece

Denise Moody

Jack Moody

Glenys Quick

Stephen Henry

Andrew Phillips