

Forge Theatre and Arts Hub



Technical Specifications Forge Theatre and Arts Hub 80 McKean St, Bairnsdale

Current as of July 2019

Arn Maree Jenkins
Operations Officer
Ph: (03) 5153 9642
Email: arnmareej@egipps.vic.gov.au

Benn Sargood
Head Technician
Ph: 0427 225 062
Email: benns@egipps.vic.gov.au

Venue Specifications

Seating Capacity

358 with 4 Wheelchair Positions Total Capacity: 362

Please refer to the attached Seating Plan – [APPENDIX C](#)

Production Access

Loading Bay Height 3.9 metres

Loading Bay Width 2.9 metres

Height from Street 1.1 metres

Stage Dimensions

Proscenium width 14.60m

Proscenium height 3.98m (max)

Stage depth 7080

Stage height above Stalls 1.12m

Stage height above Pit floor 2.24m

Please refer to the attached Stage Plan – [APPENDIX A](#)

Technical Equipment Lists

Lighting

- Martin M1 Lighting Console
- Martin M2GO Lighting Console
- 36 dimmer channels (Jands)
- 18 x ETC Source4 15-30
- 27 x ETC Source4 Fresnel (With Barndoors)
- 12 x ETC Source4 JR 25-50
- 4 x Selecon Pacific 25-50
- 7 x Chauvet Ovation C-640FC
- 16 x Par 56 Par Cans
- 14 x 18 x 3watt LED Cans (3ch)
- 7 x 1watt LED Cans (5ch)
- 4 x Pinspot
- 1 x Selecon Pacific 80V 1200W Follow Spot
- 1 x 18" Mirror ball with Motor
- 1 x Antari HZ400 Haze Machine

Please refer to the Standard Rig plan – [APPENDIX B](#)

Sound

- | | |
|--|--|
| <ul style="list-style-type: none"> • 1 x DiGiCo SD9 Stealth Core 2 Digital Mixing Console • 2 x DiGiCo D-Rack 32/16 Racks, one permanently DSPS the other floating where required • 1 x D&B Audiotechnik 25S-D FOH System • 1 x D&B Audiotechnik 21S Subwoofer • 3 x D&B Audiotechnik 5S Front Fill Speakers • 1 x Xilica Solaro FOH Processing • 6 x RCF 310A MK3 powered speakers • 2 x JBL EON15G2 • 4 x Sennheiser EW300G3 B Band Hand Held Microphones • 4 x Sennheiser EW300G3 B Band TX Belt pack • 4 x DPA 4188 Directional Headsets to Suit Sennheiser Units • 1 x Shure MX412/S Lectern Mic • 4 x Shure SM57 microphone | <ul style="list-style-type: none"> • 3 x Shure Beta58 microphone • 1 x Shure PG Drum Pack (PG52/2xPG81/3xPG56) • 1 x Sennheiser e902 Kick Drum Microphone • 2 x Rode NT5 condenser microphone • 2 x Rode M5 condenser microphone • 1 x Beyer Dynamic M88 Vocal/Kick Drum microphone • 12 x Tall Boom arm microphone stands • 4 x Medium Boom arm microphone stands • 2 x Short Boom arm microphone stands • 4 x K&M Round Base Straight Stand • 4 x DBX Active DI • 3 x Radial J48 Active DI • 1 x 12/4 15m multicore with drop box • 1 x 12way 10m multicore with drop box • 2 x Denon DNC-620 CD Player |
|--|--|

Audio Visual / Conference Equipment

- 2 x NEC NP3250 Projector
- 1 x Panasonic DVD Player
- 1 x 6' x 8' Fastfold projector screen front or rear project
- 1 x Push Up 4:3 Projector Screen
- 1 x NEC V260X Projector
- 1 x Whiteboard

Fixed Equipment

FOH loudspeaker system:

- 2 x D&B Audiotechnik 24S-D flown in LR configuration
- 2 x D&B Audiotechnik 21S Dual 21" Flown Behind LR
- 3 x D&B Audiotechnik 5S Lipfill Mounted in LCR Configuration

House equalization on FOH speakers, able to be bypassed or over patched

Tie Lines

First named location has female XLRs, second named location has male XLRs:

- 40 x DSOP – Control Position (8ret)
- 20 x Orchestra Pit – Control Position (4ret)

Sound & AV Facilities - General Information

The sound facilities include:

A permanently installed FOH loudspeaker system with dedicated Equalization

Portable equipment, including microphones, stands, cables, mixing console, replay devices, portable self-powered speakers (suitable for stage fold back or use in foyers etc as a main PA).

A flexible tie line system for use with in house equipment or touring sound systems.

Comprehensive patching facilities in control room and DSPTS.

Large diameter pipes for straightforward installation of temporary cables between operational locations and stage, and around perimeter of stage area.

Performance relay and induction loop distribution system with inputs for acoustic pickup (house monitoring microphone) and mixing console if necessary.

Venue Information

Flies

The Forge Theatre is not equipped with a scenery flying system.

- 2 x Tri Truss LX bars on 2 chain blocks each (½ tonne)

Miscellaneous

- 1 x 'panoramic' masking with entrances US & DS on Prompt
- 1 x 'panoramic' masking with entrances US & DS on OP
- 1 x white Cyc wall

Access Equipment

- 1 x JLG 20MVL Elevated Work Platform
- 1 x Aluminium A-Frame 5m
- 1 x Aluminium A-Frame 1.6 metres
- 1 x Extension Aluminium A-Frame Ladder
- 1 x Aluminium A-Frame 2m

3 Phase Power Distribution

- 1 x 32A DS Prompt Side
- 1 x 40A Bio Box
- 1 x 32A Bio Box

Cat 5 Links

- 2 x Bio Box to FOH Lighting Bar
- 2 x Audio Control to Stage (DSPTS)
- 2 x DSPTS to DSOP
- 2 x DSPTS to Orchestra Bar

Green (Sound & AV) Power

- 2 x 40A 3 Phase outlets located in Tech Store DSPTS
- 3 x Twofa's in Prompt Corner
- 1 x Twofa Rear Proscenium DSPTS
- 1 x Twofa Rear Proscenium DSOP
- 3 x Twofa Orchestra Pit
- 3 x Twofa FOH Mix Position
- 2 x Twofa Bio Box
- 1 x Twofa Cyc Wall PS
- 1 x Twofa Cyc Wall OP

Production Communication

- Jands E200 base station (2 channel) situated DSPS
- 5 x Jands E100 single channel belt packs with single/double muff headset
- Dressing room paging from wired handheld in prompt corner.
- Backstage performance relay.

CCTV

- Camera mounted above Audio control position
- Monitors situated in Dressing Rooms 1 & 2
- Monitors situated in PS and OP Wing
- Show relay feed to Dressing Rooms 1 & 2
- Show relay feed to Staff Office

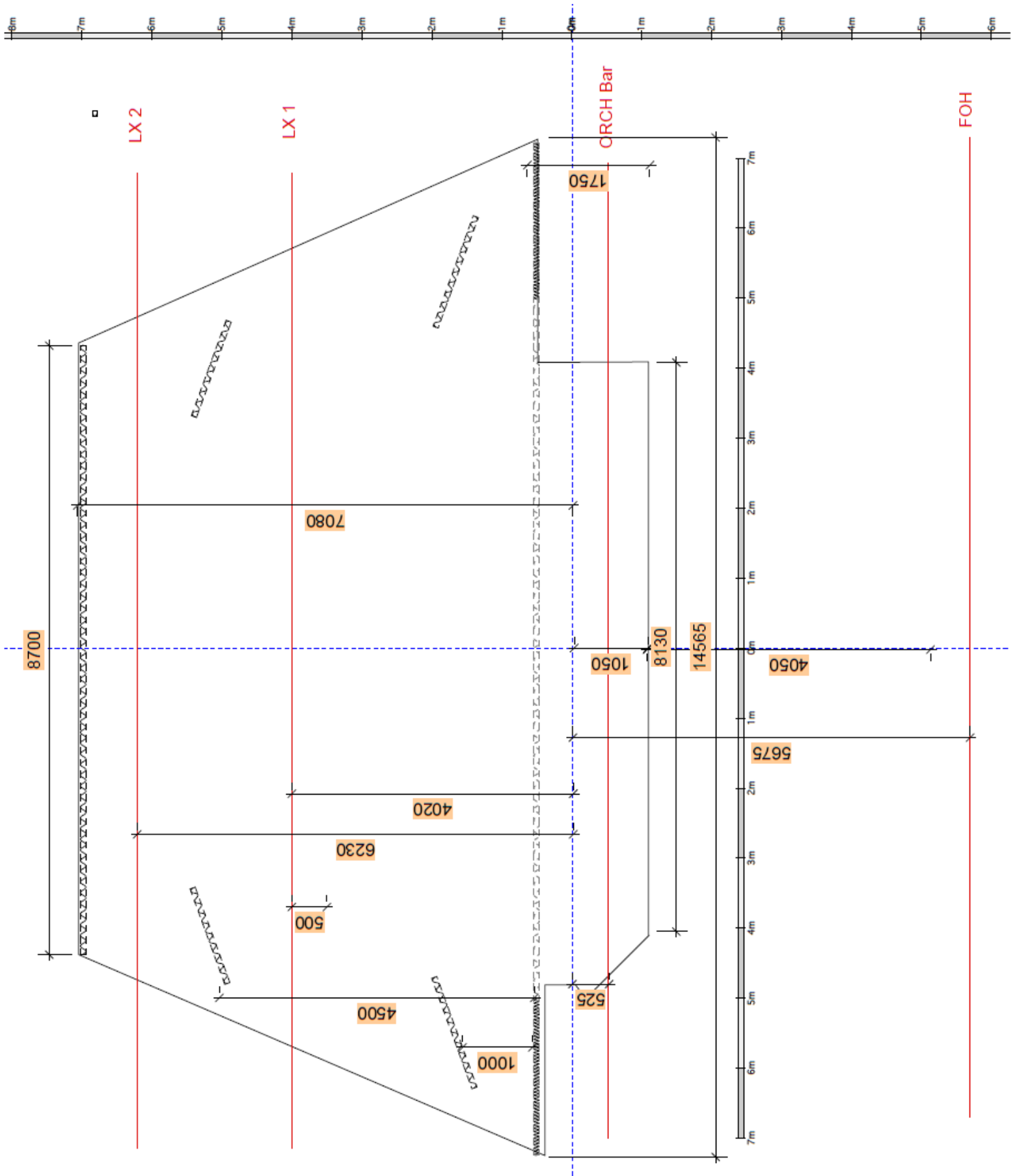
Dressing Rooms

- 2 x Dressing Rooms for 15-20 people.
- McKean Room can be hired for additional dressing room space if required.

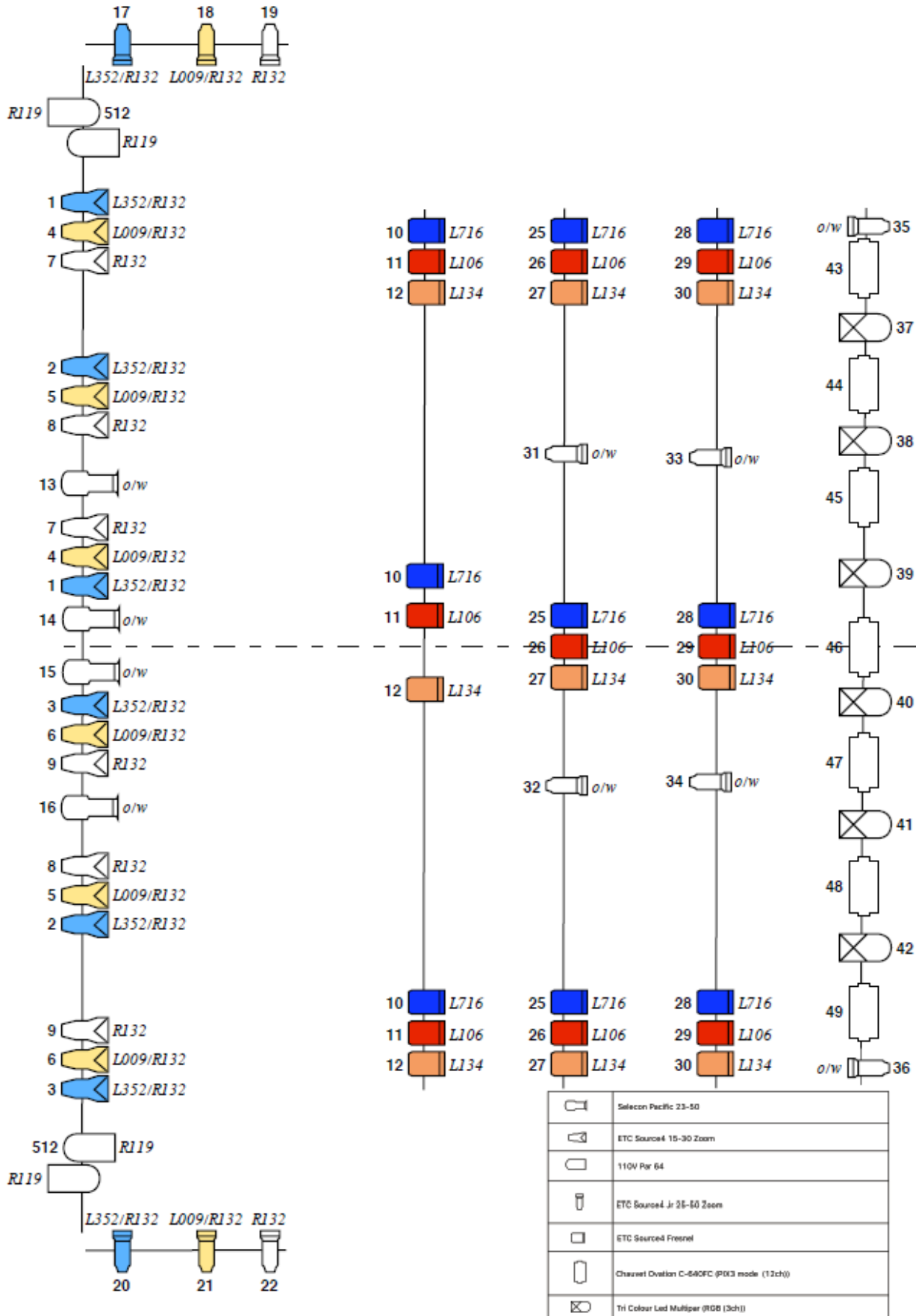
Ancillary Equipment

- 40 x function chairs
- 10 x rectangular folding tables 183cm x 76cm
- 1 x Yamaha Vivace 5'4" Ebony Baby Grand Piano
- 1 x Lectern

APPENDIX A – STAGE FLOOR PLAN & LIGHTING LAYOUT



APPENDIX B – STANDARD LIGHTING RIG



APPENDIX C – SEATING PLAN

