

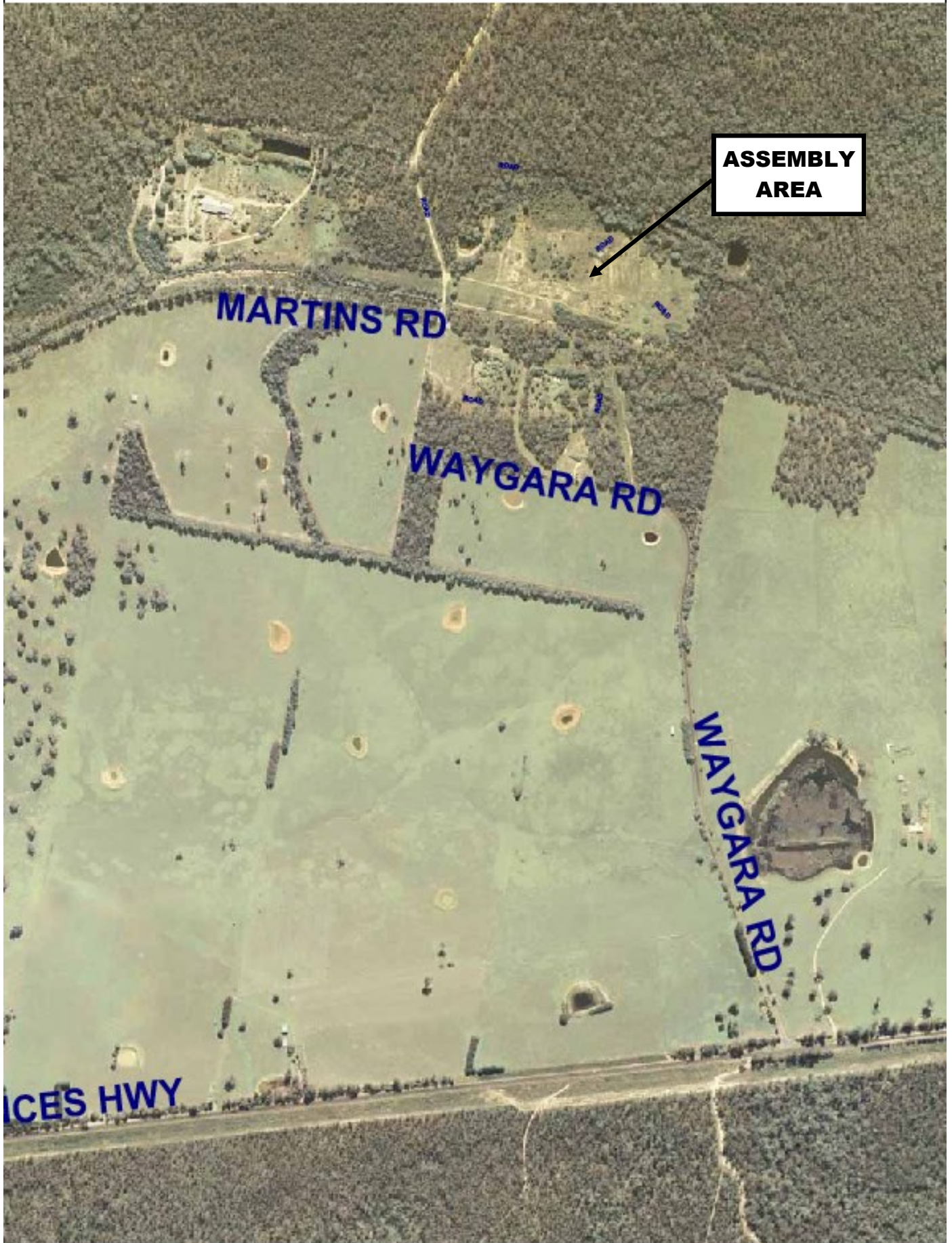
WAYGARA

Local Incident Management Plan

Information about what to do during a local incident, Fire, Flood, Storm.

What to Expect	Assembly Area	When to Go
<p>Limited visibility during fires or storms</p> <p>Limited or restricted access to Waygara area</p> <p>Assembly area will be crowded and you will be told what to do</p> <p>Loss of power and telephone communications</p> <p>The electricity supply may fail. DO NOT rely on the electricity supply for fire fighting purposes. Remember, cordless telephones rely on power which may be unavailable</p>	<p>Old Waygara Mill Site, cleared area</p> <p>This is the designated 'Assembly Area' during a local incident - Fire, Flood, Storm, Accident etc.</p> <p>THIS IS NOT A REFUGE LOCATION</p> <p>Wear appropriate footwear and clothing</p>	<p>When you hear that an incident is impacting or will impact the Waygara area</p> <p>When advised by CFA, DSE, SES, Victoria Police or local radio</p> <p>When leaving your home, close all windows and doors, close curtains, drapes, blinds, turn off gas bottles, lights and air conditioning</p> <p>LEAVE EARLY !</p>
Get Ready Now	Phone Numbers	Websites
<p>Understand the risks and develop a personal / family incident survival plan and rehearse your plan</p> <p>Pack an 'Emergency Kit' including items from 'What to Take'</p> <p>Prepare your house to give it the best chance of surviving an incident</p> <p>Make sure your vehicle has fuel</p>	<p>Police, Fire, Ambulance 000</p> <p>Bushfire Info Line (VBIL) 1800 240 667</p> <p>VicRoads 13 11 70</p> <p>State Emergency Service 13 25 00</p> <p>Hearing Impaired, call text phone TTY 1800 122 969</p> <p>East Gippsland Shire Council 1300 555 886</p> <p>5153 9500</p>	<p>ABC (news / alerts) www.abc.net.au/emergency</p> <p>Bureau of Meteorology (weather) www.bom.gov.au</p> <p>Country Fire Authority (fire information) www.cfa.vic.gov.au</p> <p>DSE (Department of Sustainability) www.dse.vic.gov.au</p> <p>East Gippsland Shire Council www.eastgippsland.vic.gov.au</p> <p>Emergency Warning Network www.ewn.com.au</p> <p>Red Cross (relief information) www.redcross.org.au</p> <p>SES (flood information) www.ses.vic.gov.au</p> <p>VicRoads (traffic information) www.vicroads.vic.gov.au</p>
Publications		
<p>CFA 'Prepare, Act, Survive' fire ready kit</p> <p>SES Emergency Toolkit - Flood, Tsunami, Storm, and Quake Safe</p> <p>RED CROSS Emergency REDiPlan</p>	<th data-bbox="531 1686 1062 1749">Monitor Local Radio for Emergency Warnings</th>	Monitor Local Radio for Emergency Warnings
What to Take		What to Wear
<p>Essential clothing, photos, personal items, woollen blanket, food and drinking water</p> <p>Prescriptions and medications for 7 days / toiletries for at least 3 days</p> <p>Documents - passport, titles, bank accounts, birth, marriage and insurance certificates</p> <p>Mobile phone, charger, portable radio, torch and batteries</p> <p>Pets (food, leads, cages, bowls)</p>	<p>Your Local Radio Stations</p> <p>ABC 100.7 FM</p> <p>ABC 828 AM</p> <p>3TR 99.9 FM</p> <p>REG 105.5 FM</p>	<p>Fire Natural fibre (wool or cotton), long sleeve top and long pants, solid footwear (leather), wide brimmed hat, smoke mask, goggles, leather gloves and a towel.</p> <p>Flood Solid footwear (leather), wet weather clothing</p>

Waygara (Not to Scale)



**ASSEMBLY
AREA**

11/2/2013

Disclaimer: This material may be of assistance to you but the State of Victoria and the East Gippsland Shire Council and their employees do not guarantee that this publication is either without flaw of any kind or is wholly appropriate for your particular purposes and therefore disclaims all liability for any error, loss or consequences which may arise from your relying on any information contained in this material.

Copyright © 2008, East Gippsland Shire Council