

# Local Incident Management Plan

## TAMBO CROSSING

INFORMATION ABOUT WHAT TO DO DURING A LOCAL INCIDENT, FIRE, FLOOD, STORM, ETC.

### PHONE NUMBERS

Police, Fire, Ambulance  
**000**

VicEmergency Hotline  
**1800 226 226**

Bushfire Info Line (VBIL)  
**1800 240 667**

Regional Roads Victoria  
**13 11 70**

State Emergency Service  
**132 500**

Hearing Impaired, call text  
phone  
**TTY 1800 122 969**

East Gippsland Shire Council  
**1300 555 886 /  
5153 9500**

### LOCAL SERVICES at ENSAY

Little River Inn Hotel  
Bush Nurse  
Ambulance  
Fire Station

### GET READY NOW

Develop a personal / family incident plan - Practice your plan - Understand the risks  
Pack an 'Emergency Kit' including items from 'What to Take'  
Prepare your house  
Make sure your vehicle has fuel

**IF YOUR PLAN FAILS**

### WHAT TO WEAR FIRE

Natural fibre (wool or cotton), long sleeve top and long pants, solid footwear (leather), wide brimmed hat, smoke mask, goggles, leather gloves, towel

### FLOOD

Solid footwear (leather), warm clothing, wet weather gear

**IF LIMP IS ACTIVATED**

### PUBLICATIONS

CFA - Fire Ready Plan  
SES - Emergency Toolkit  
Red Cross - Emergency REDiPlan  
Facebook CFA, SES, DELWP  
Smart Phone / tablet - ABC App (free)  
VicEmergency App

### WHEN TO LEAVE

When you hear that an incident is impacting or will impact on the Tambo Crossing District  
When advised by **CFA, DELWP, SES, Victoria Police** or local radio  
When leaving your home, close all windows and doors, close curtains, drapes, blinds, turn off lights, gas and appliance

**IF LIMP IS ACTIVATED**

### GO TO ASSEMBLY AREA

**"THE TWO ROCKS & A SHED"**  
Intersection of Great Alpine Road, Tambo Spur & Nally's Roads

### SHELTER AREA

Adjacent to Dean's Bridge over the Tambo River on the Old Coach Road

**WATCH AND ACT' warnings may tell communities to activate their LIMP**

### EMERGENCY WARNINGS

Poor reception areas -  
Melbourne ABC radio available via your satellite television system (**VAST**) using the remote Radio/TV button

### WHAT TO TAKE

Essential clothing, photos, personal items, woollen blanket, food and drinking water  
Prescriptions and medications for 7 days / toiletries for 3 days  
Documents - photographs, passport, titles, bank accounts, birth, marriage and insurance certificates

Mobiles, charger, portable radio, torch and batteries  
Pets are owners responsibility (food, leads, cages, bowls)

**IF LIMP IS ACTIVATED**

### WHAT TO EXPECT

Limited visibility during fires or storms  
Limited or restricted access into and/or out of Tambo Crossing area  
Assembly area will be crowded and you may receive directions from authorities  
Loss of power and telephone communications

**Do not** rely on electricity supply for fire fighting purposes.  
Remember, cordless telephones rely on power which may be unavailable  
**Do not** drive in smoke, flood waters

### WEBSITES

**VicEmergency (Information)**  
[www.emergency.vic.gov.au](http://www.emergency.vic.gov.au)

**Regional Roads Victoria (Traffic Information)**  
[www.vicroads.vic.gov.au](http://www.vicroads.vic.gov.au)

**ABC (News/alerts)**  
[www.abc.net.au/emergency](http://www.abc.net.au/emergency)

**East Gippsland Shire Council**  
[www.eastgippsland.vic.gov.au](http://www.eastgippsland.vic.gov.au)

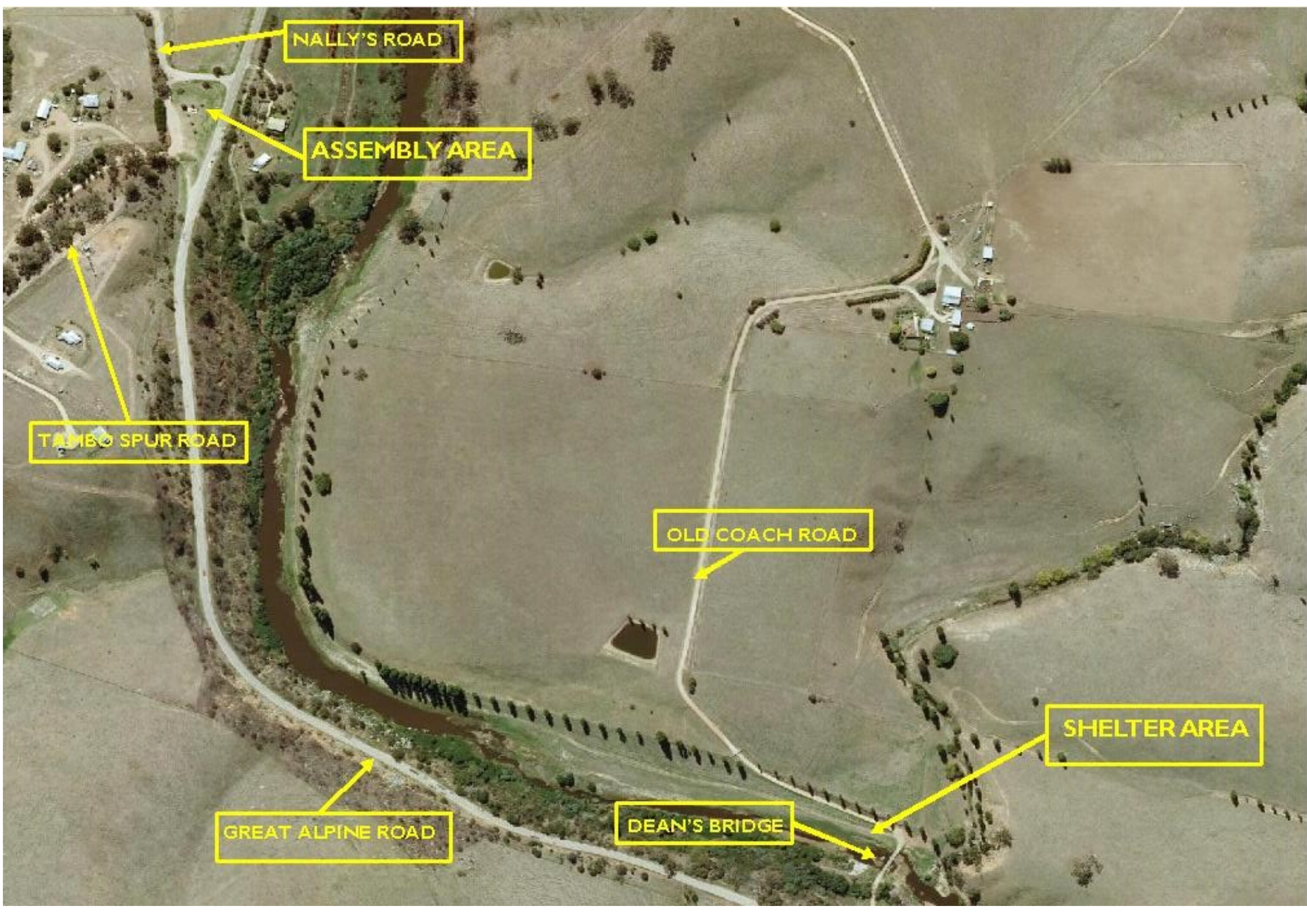
**Bureau of Meteorology (Weather)**  
[www.bom.gov.au](http://www.bom.gov.au)

**LISTEN TO LOCAL RADIO FOR EMERGENCY WARNINGS**

ABC Local - 828AM  
ABC Local - 100.7FM

**Your GPS**  
Ref: \_\_\_\_\_

**Your CFA Map**  
Ref: \_\_\_\_\_



NALLY'S ROAD

ASSEMBLY AREA

TAMBO SPUR ROAD

OLD COACH ROAD

GREAT ALPINE ROAD

DEAN'S BRIDGE

SHELTER AREA