

Local Incident Management Plan

Club Terrace

Information about what to do during a local incident, fire, flood, storm, etc.

Get Ready Now

Develop a personal / family incident plan - Practice your plan - Understand the risks

Pack an 'Emergency Kit' including items from 'What to Take'

Prepare your house

Make sure your vehicle has fuel

Monitor Local Radio for Emergency Warnings

ABC Local (FM) - 106.1

ABC Local (AM) - 828

ABC Radio National (FM) - 107.7

REG (FM) - 105.5, 90.7

Battery Operated Radio Ready

Poor reception areas -

Melbourne ABC radio available via your satellite television system using the remote Radio/TV button

What to Expect

Limited visibility during fires or storms

Limited or restricted access into and/or out of Club Terrace Area

Assembly area will be crowded and you may receive directions from authorities

Loss of power and telephone communications

Do not rely on electricity supply for fire fighting purposes. Remember, cordless telephones rely on power which may be unavailable

Do not drive in smoke, flood waters or during storms

Your GPS Ref.: _____

When to leave

When you hear that an incident is impacting or will impact on the Club Terrace area.

When advised by **CFA, DELWP, SES, Victoria Police** or local radio

When leaving your home, close all windows and doors, close curtains, drapes, blinds, turn off lights, gas and appliances

What to wear

Fire

Natural fibre (wool or cotton), long sleeve top and long pants, solid footwear (leather), wide brimmed hat, smoke mask, goggles, leather gloves, towel

Flood

Solid footwear (leather), warm clothing, wet weather gear

What to take

Essential clothing, photos, personal items, woollen blanket, food and drinking water

Prescriptions and medications for 7 days / toiletries for 3 days

Documents - photographs, passport, titles, bank accounts, birth, marriage and insurance certificates

Mobiles, charger, portable radio, torch and batteries

Pets are owners responsibility (food, leads, cages, bowls)

ONLY pack what is essential

Publications

CFA - Fire Ready Plan

SES - Emergency Toolkit

Red Cross - Emergency REDiPlan

Your CFA Map Ref.: _____

Phone numbers

Police, Fire, Ambulance
000

VicEmergency Hotline
1800 226 226

VicRoads
13 11 70

State Emergency Service
13 25 00

Hearing Impaired, call text phone
TTY 1800 122 969

East Gippsland Shire Council
1300 555 886 (5153 9500)

Club Terrace Telephone Tree
Linda Stone

0427 938 875

Websites

VicEmergency (Information)

<https://emergency.vic.gov.au>

CFA (fire information)

www.cfa.vic.gov.au

VicRoads (traffic information)

www.vicroads.vic.gov.au

DELWP (forest fire information)

www.delwp.vic.gov.au

SES (flood information)

www.ses.vic.gov.au

Emergency Warning Network

www.ewn.com.au

ABC (news / alerts)

www.abc.net.au/emergency

East Gippsland Shire

www.eastgippsland.vic.gov.au

Bureau of Meteorology (weather)

www.bom.gov.au

Red Cross (relief information)

www.redcross.org.au

Facebook - CFA & DELWP

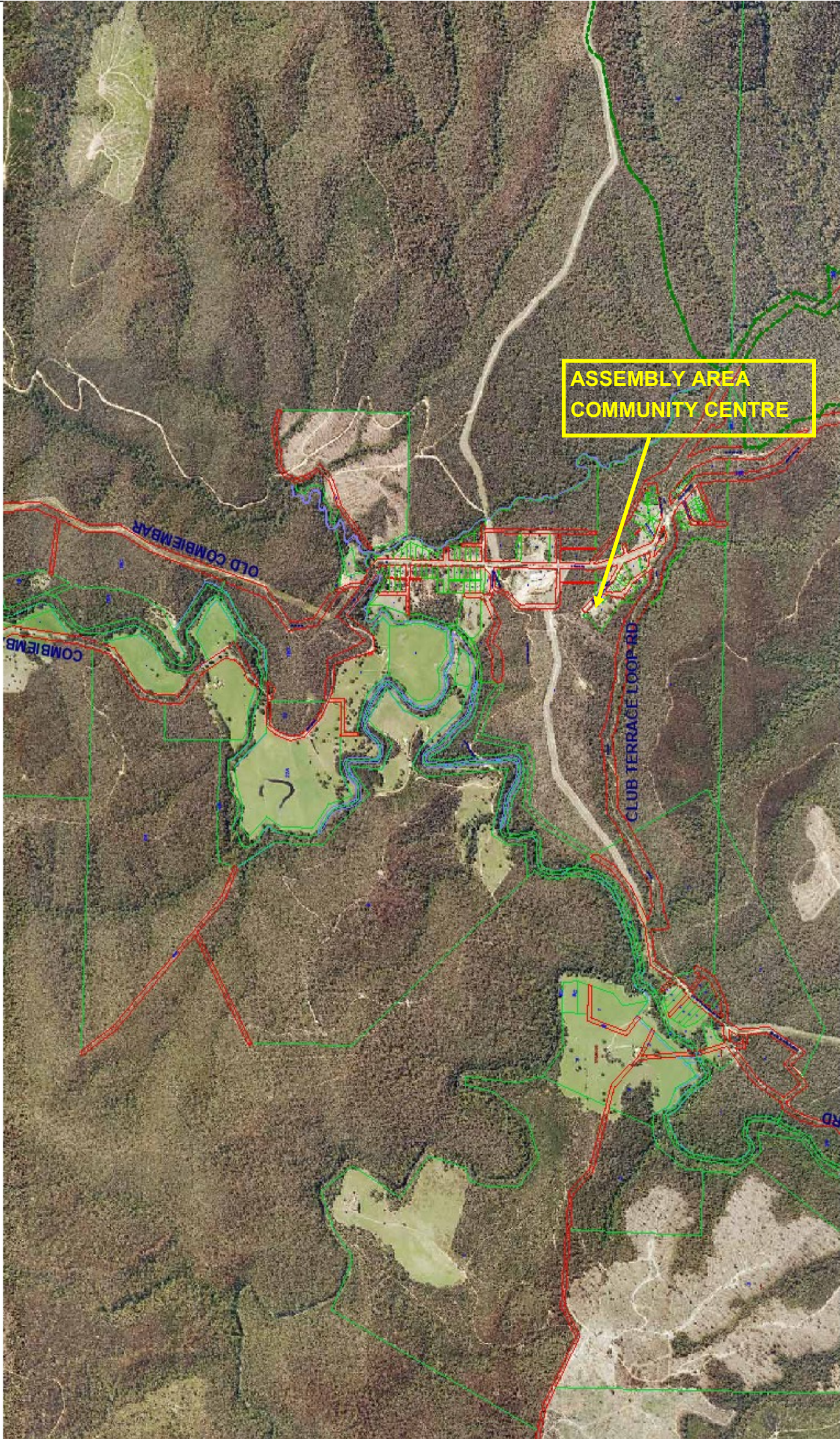
Smart phone / tablet

Designated Assembly Areas

Club Terrace Community Centre, 25 School Road, Club Terrace

|

Club Terrace (Not to Scale)



21/3/2011

Disclaimer: This material may be of assistance to you but the State of Victoria and the East Gippsland Shire Council and their employees do not guarantee that this publication is either without flaw or any kind or is entirely appropriate for your particular purposes and therefore disclaims all liability for any error, loss or consequences which may arise from your relying on any information contained in this material.

Copyright © 2008, East Gippsland Shire Council