

Bonang and Districts Local Incident Management Plan & Reference Guide Information Booklet 2016 – 2018

Version 1

This document is to assist the community in the development and preparation of their individual **Incident Management Plan** (in the event of an emergency).

Please take time to read it and share the information with others.

The Bonang and District communities do not in any circumstances accept responsibility for the accuracy or suitability or otherwise of any information published in this booklet. It also disclaims any liability for loss or damage arising from the use of this booklet or the information contained therein.

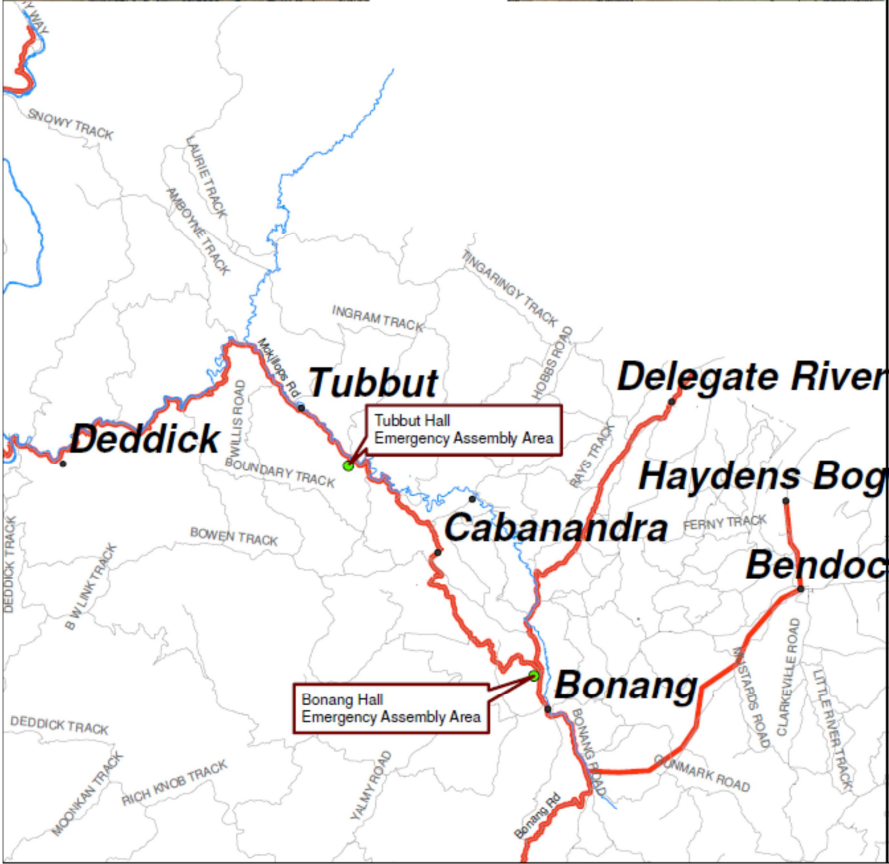
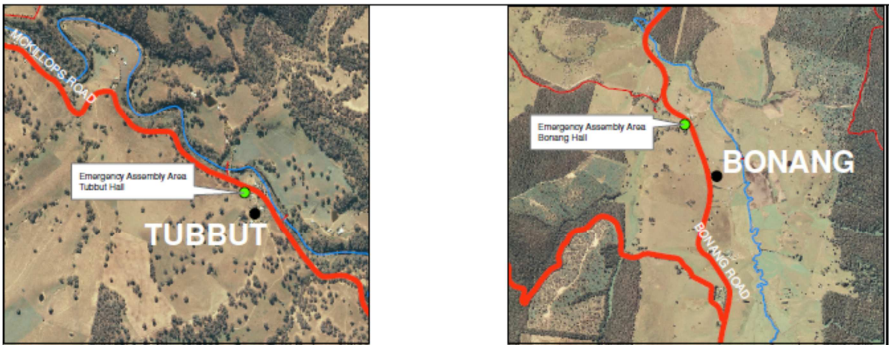
The only **Designated Neighbourhood Safer Place** in times of fires is the **Tubbut Hall**. This is for when personal emergency plans fail and is not for accommodation.

Numbers
<ul style="list-style-type: none">• VicEmergency Hotline – 1800 226 226• Emergency 000 – Police, Fire, Ambulance• Vic Roads – 13 11 70• SES – 13 2500 Floods and Storm Emergency
Websites
<ul style="list-style-type: none">• CFA www.cfa.vic.gov.au• EGSC www.eastgippsland.vic.gov.au• VicRoads www.vicroads.vic.gov.au• DELWP www.delwp.vic.gov.au• BOM www.bom.gov.au• SES www.ses.vic.gov.au• POLICE www.police.vic.gov.au

Table of Contents

1. Introduction	pg4
2. Individual Emergency Plans	pg4
3. Map References	pg5
4. Community Planning	pg5
5. Locations for Community Information	pg6
6. Role of Emergency Services	pg6
7. When to Activate My Plan Phone Trees	pg7
8. Water and Food	pg7
9. Registration	pg8
10. Assembly Areas	pg9
11. Staging Areas	pg9
12. Medical Considerations	pg10
13. Follow Up Assistance	pg10
14. Road Closures	pg10
15. Services	pg 11
16. Event and Recovery Needs	pg12
17. Appendix	pg

Our district MAP



Community Emergency Preparedness Information

Bonang and Districts

1. Introduction

The following is provided for information purposes only. The more prepared you are the greater your chance of survival when **any type** of emergency situation arises.

For accurate updates on emergency situations you should monitor your radio, internet, (stations listed in the back). Be mindful, verbal information may not be accurate.

2. Individual Emergency Plans

You need to consider:

- Making your own plan
- What is the risk?
- Do you stay or go if there is a threat of fire or flood
- Protection of your property and possessions
- Essential equipment you will need.
eg. pumps, hoses, sprinklers, PPE.

Don't become complacent. In the event of a bushfire you need to decide whether you will stay and actively defend your home or whether you will leave before the fire threatens. Leaving at the last minute when a fire is burning nearby can have serious, life threatening consequences. So **LEAVE EARLY!**

If you require assistance with a fire plan contact your local CFA, or the Victorian Bushfire Information Line. (Numbers listed in back).

The CFA booklet **Fire Ready Kit** updated 2013 is highly recommended and is available from the Tubbut Neighbourhood House and Bonang Hall.

3. Map References

It is a safe practice to know the Spatial Vision Map Book reference for your location. Map books may be viewed at Tubbut Neighbourhood House, Tubbut Supper Room, Tubbut Fire Station and Bonang Hall.

You should know your GPS map reference for your property.

4. Community Planning

Be prepared for any emergency that may impact on the people or the assets of our community.

Small community groups in the Bonang and District can receive assistance from the CFA to develop bushfire strategies that suit their lifestyle, environment and values.

DELWP encourages members of the community to be actively involved in fire planning throughout the year. Copies of the Fire Operations Plan Map are available at DELWP Office in Bendoc for viewing and suggestions. These suggestions may include areas the community would like to see added to or modified, in relation to planned burns and associated works. Contact the local DELWP office for further information, DELWP staff will be able to discuss issues with you and ensure you have the latest information to assist with suggestions.

5. Locations for Community Information

In the event of emergency, information may be available from:

Bonang Hall
Tubbut Hall
Tubbut Neighbourhood House

6. Roles of the Emergency Services

Depending on the type of emergency any of the emergency services or Government agencies may take the lead role. Other emergency services may take a supportive role.

Possible lead emergency services:

Police, State Emergency Service, Country Fire Authority,
Department of Environment, Land, Water & Planning
(DELWP)
Parks Victoria.

Any of these agencies may be support agencies. In addition there may be East Gippsland Shire Council (EGSC), Ambulance, etc.

Under the CFA Act there are numerous powers that are in place when there is the threat or presence of fire. These include access to properties and buildings and taking action which will assist in suppressing a fire.

Assist fire fighters by having gates unlocked.

7. When to Activate My Plan

Listen to your local ABC radio Station, view updates on the CFA or DELWP websites and make your decision to stay or go early on extreme or code red days. **The Victorian Bushfire Information Line is 1800 240 667.**

Once the Incident Control Centre is activated the Telephone Tree resource will be used, if necessary.

Phone Trees

Phone trees have been organised for Bonang and Districts. Please check your contact details are correct at the Tubbut Neighbourhood House.

NB: while every effort will be made to phone you updates please use other resources to stay informed. The phone tree is an adjunct to information only. Know who your phone tree leader is and inform them of phone number changes.

8. Water and Food

River Water Supply

- ◆ This supply may be contaminated in the event of a flood /fire. Be prepared to boil water, for drinking.

Other Sources of Water

- Please identify an alternative water source in the event that your normal supply is interrupted.
- Drinking water will be made available at Bonang Hall, Tubbut Hall and Tubbut Neighbourhood House.

REMEMBER TO DISCONNECT DOWNPIPE TO TANKS BEFORE RAIN POST FIRE.

Bonang Standpipe

The Standpipe is situated on Bonang Rd, 250m north of the Bonang and Tubbut Rd intersection.

Food Supplies

As deliveries of fresh food may not occur have a supply on hand for emergencies.

9. Registration

- Police will activate the **Red Cross registration centres** when it is deemed necessary. If your emergency plan is to leave your premises it is requested that you register yourself, in person, at the registration centre.
- However, if your plan is to leave town prior to a registration centre being activated it is still requested that you register by contacting **1300 555 886**. Registration allows your whereabouts to be verified.
- Complete the **Intentions Book** which is located outside the Bonang Hall. If not able to complete the Intentions Book in person contact Sue Collins on 64580287 or another Bonang resident to complete for you.

10. Assembly Areas

Local Assembly Areas

The assembly areas that will be utilised for any person in this area will be:

In the event of Fire or Emergency:

- Bonang** -Bonang Hall
- Tubbut** -Tubbut Hall
- Goongerah** -1.Goongerah Hall &
-2. Lyn & Rory's land, 6884 Bonang Rd (fire only)

If you are using an assembly area you may be updated on the emergency situation.

Please ensure that your vehicle is parked safely.

Parents are to ensure that children are suitably behaved.

Pets are the owner's responsibility and should be under control at all times.

Bring **medications and prescriptions**, personal items, and your child's favourite toy/comforter.

Alcohol at the Assembly area is strictly forbidden.

11. Staging Areas

A staging area is a place where Emergency Services hold their briefings for their crews. The lead emergency services will identify a location or locations where these will be held.

Staging areas are for emergency services personnel only.

12. Medical Considerations

Ambulance - Usual service applies subject to being able to provide a service safely.

Medication –Is your own responsibility.

Consideration should be given to evacuating any person under the age of 17, any person over the age of 70 and anyone who has a medical condition or requires extra care.

13. Follow-Up Assistance

It is not uncommon for people to need personal support following an emergency. If you need assistance in any form please contact East Gippsland Shire or Orbost Regional Health.

14. Road Closures

If any road is closed obey directions as provided. A road will only be closed if it is deemed unsafe. Roads will be reopened for local access with appropriate identification as soon as it's safe.

For identification, copy your driver's license, rate notice and Property Identification Code (PIC) to keep in your glove box, this will show the police you are a local resident and not sightseeing.

15. Services

Electricity

- Expect and plan for power disruptions.
- a mineral earth break (i.e. bare dirt) should be prepared around the base of the wooden poles.
- Grid connected solar systems may automatically disconnect in a blackout.

Telephone

- Plan for Telephone Disruptions!
- Mobile phone coverage is not available.
- Telstra or other service providers can assist with telephone diversions.
- Ensure there is at least one non electric phone at each property

When the phone service fails, **emergency calls** can be made using:

- Trunk radio
- Satellite phones

The locations of these facilities are listed in the back.

Radio Stations

- Monitor the ABC radio stations, as listed in the back, for all information.
- Have a battery operated radio and spare batteries

Other Communications

- UHF radio when and if available

Fuel/Petrol Stations

- Fuel supplies may be limited, or interrupted in any emergency.
- No power-no fuel

16. Event and recovery needs

- Minutes taken at all Community Meetings
- Community debrief/s
- Choice of Counsellors
- East Gippsland Shire support

Victorian Emergency Recovery

VicEmergency Hotline 1800 226 226

Website www.emergency.vic.gov.au

East Gippsland Shire Council (EGSC) 1300 555 886

17. Appendix

Phone numbers

For all Emergencies	000
Mobile Emergency Number	112
Flood and Storm (SES)	132 500
Road Closures	
VICROADS	131 170
New South Wales	131 700
VicEmergency Hotline	1800 240 667
Poisons Information Line	13 11 26
East Gippsland Shire Council (EGSC) (Support and Assistance)	1300 555 886 Press 1 for Emergency
National Relay Service	1800 555 667
Speech impairment	
Hearing impairment	
Red Cross Registration Centres	
Until registration centres are activated information on where you can register will be provided by EGSC on	1300 555 886.
Police Emergency Information Line	1800 444 343
Interpreter	131450

Local Agencies	Phone	Fax
Bendoc Police	026458 1444	
Delegate Police	026458 8044	
Bombala Police	026458 3444	
Orbost Police	035154 1073	
Orbost Regional Health	035154 6666	0351542366
Bombala MPS	028458 5777	0264585767
Delegate MPS	026459 8000	0264588156
Orbost Medical Practice	035154 6777	0351546791
Bombala Medical Practice	026458 3220	0264583809
Tubbut Neighbourhood House	026458 0295	0264580295
Bendoc DELWP	0264590500 or 0264590508 fire emergency	
Orbost DELWP	0351611222 or 0351611333 fire emergency	

Websites

VicEmergency www.emergency.vic.gov.au

DELWP www.delwp.vic.gov.au/fire-and-emergencies

CFA www.cfa.vic.gov.au

East Gippsland Shire www.eastgippsland.vic.gov.au

Bureau of Meteorology www.bom.gov.au

ABC Radio www.abc.net.au/radio/listen-online/

Australian Red Cross www.redcross.org.au

SES www.ses.vic.gov.au

VicRoads www.vicroads.vic.gov.au

Tubbut Neighbourhood House Facebook page
www.facebook.com/tubbut.neighbourhoodhouse

These applications are available for Tablets or Smart Phones

VicEmergency App

ABC Radio mobile App

Communications

Radio Stations – (not all these stations are available in all areas)

ABC Radio National (FM)	106.3, 98.7, 99.7, 103.5
ABC Local Radio (FM)	100.7, 103.5, 97.1
ABC Local Radio (AM)	828
3TR (AM)	1242
REG (FM)	105.5, 90.7
ABC NSW (FM)	94.1, 100.9
ABC Bega (AM)	810
ABC VIC (AM)	774
2XL	918

Satellite television transmits radio broadcasts

Mobile Phone – (not available in most areas)

Telstra 3G

Telephone Diversion

*21 destination number #

To remove service dial *21*

Trunk Radio available at:

Local Police

Bendoc DELWP Work Centre

DELWP Vehicles

Parks Victoria Vehicles

Parks NSW Vehicles

CFA vehicles

Tubbut School Bus

Kelvin and Jamie Ingram

Public phones are available at :

Bonang Hall

Tubbut Hall

Goongerah Hall.

Acknowledgement: We wish to thank the Buchan and District Community, East Gippsland Shire, Orbost Regional Health and the Adaptation for Recovery Project Community Recovery Facilitator

Your Feedback

This information booklet is for the emergency management arrangements for Bonang and surrounding districts.

If you have any comments about this booklet please contact the Bonang and District Emergency Group (BADEG)
Telephone 02 64580287, 02 64580254 or 02 64580303

Participate/attend your community emergency meetings. It is now in your hands to keep up to date with information when an emergency event may impact, by using this Local Incident and Management Plan and Reference Guide Information Booklet for advice and information.

The Bonang and District Emergency Group will meet annually prior to the bushfire season and as necessary in emergency situations.

Remember if you feel a fire or flood may impact on you and you feel unsafe, remember to leave early before it is too late

Notes

