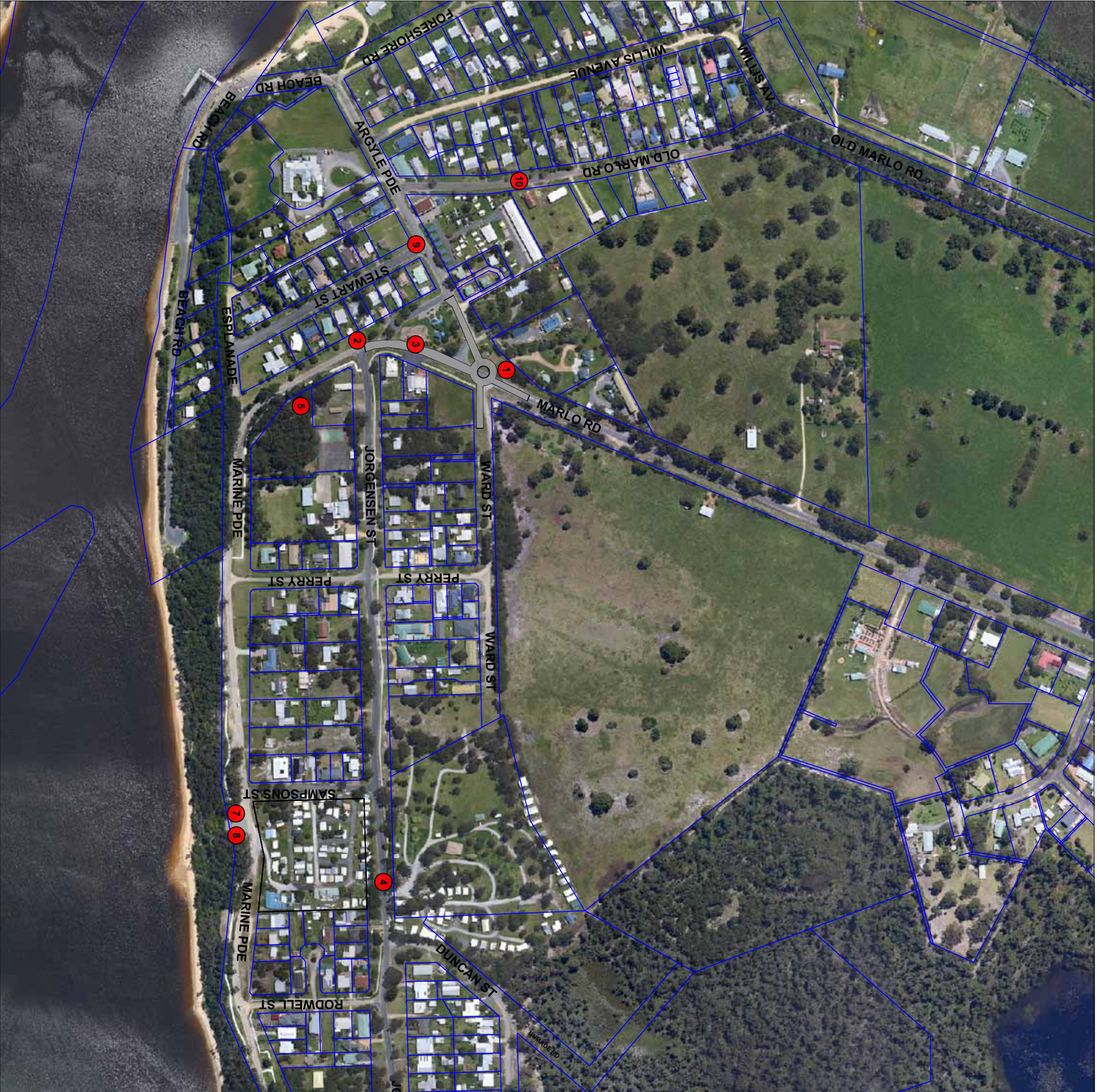


Marlo Urban Design Framework Master Plan

Description of Recommendations

1. The realignment of the intersection of Marlo Road, Argyle Parade and Ward Street, the creation of a roundabout with pedestrian protection islands to serve several functions:
 - Incorporate Ward Street and create a consistent roundabout treatment in order to ensure the safe passage of traffic.
 - Protect pedestrians as far as possible when crossing the road.
 - Take consideration for the road standards required by VicRoads, especially in regards to the requirements surrounding passing of heavy vehicles.
 - Increasing signage, for direction of Car and Caravans, due to the inability to turn around when further along Marine Parade.
2. At the intersection of Jorgenson Street and Marlo Road there is a requirement for traffic calming of North-South traffic and safe pedestrian access East-West. This is due to the perceived presence of vehicles travelling at excessive speeds, creating a dangerous situation for pedestrians.
3. Car and Boat Trailer parking required opposite shop. Marlo is frequented by campers and travellers passing through; travellers are often stopping for refreshments and supplies. There is formalised parking required to address the issue of travellers parking inappropriately and creating a potentially unsafe road situation. If the creation of parking impedes on the park area, an alternative site such as Ward Street shall need to be investigated, to be utilised for parking and restrictions placed on the existing area.
4. Parking is required on the north side of Jorgenson Street near the Caravan Park, as it sees a significant amount of parked cars at key times. The potential of creating indented parallel parking adjacent to the footpath is to be investigated in order to provide some formalisation of parking.
5. The Lighthouse reserve has been long recognised as an area requiring redevelopment, the site is in a prominent location with a great potential. A landscape plan is to be developed for the site to create a community space for passive and active recreation purposes.
6. Upgrade lookout east side of Mills Street. Works to be investigated in regards to repair of seal, traffic signage and vegetation management for sight lines of traffic.
7. An additional Public Toilet is required along Marine Parade, possibly at Sampsons lookout. Cliff stability will need to be investigated as part of this project.
8. The car and boat parking at or near the new public toilet on Marine Parade will require pedestrian safety improvements between the caravan park and the lookout. This site is currently identified as an area of concern in terms of traffic and pedestrians.
9. Increased street planting to create linkages between key places on Marine Parade. The pedestrian scale planting on Marine Parade is currently not sufficient, a plan is to be created to compliment the current streetscape and create appropriate avenues to key areas.
10. There is need to create pedestrian linkages on Old Marlo Road to separate pedestrians and vehicles.



- 1 Realignment of intersection and creation of roundabout with pedestrian protection islands. Increased signage for direction of Car and Caravan Trailers.
- 2 Traffic calming measures for Jorgensen Street intersection for North-South traffic and safe pedestrian access East-West.
- 3 Car and Boat Trailer parking required opposite shop.
- 4 Parking required on Jorgenson Street.
- 5 Lighthouse reserve Landscape plan required.
- 6 Upgrade Lookout east side of Marlo.
- 7 Additional Public Toilet along Marine Parade (Sampsons lookout).
- 8 Car and Boat parking at or near new Public Toilet on Marine Parade, Pedestrian Safety improvements between Caravan Park and Lookout.
- 9 Increased street planting to create linkages between key places.
- 10 Provide Pedestrian linkage on Old Marlo Road.